

LINDY ESSENTIALS



CONTENT



04

HDMI &
DISPLAYPORT
CABLES



09

PATCH
CABLE



10

CONVERTERS
& ADAPTERS



13

USB
PRODUCTS



16

SPLITTERS
SWITCHES
MATRIX AV



18

EXTENDERS



20

PORT
BLOCKERS



21

DOCKING
STATIONS



22

CHARGERS
ACCESSORIES



23

NEW
PRODUCTS

INTRODUCE LINDY

More than

200

employees

90

countries

2500

products

1

brand

Established in 1932, Lindy is one of Europe's leading suppliers of cables & connectivity solutions.

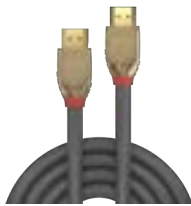
With a comprehensive and innovative product portfolio, Lindy offers installers, system integrators and resellers the ultimate resource for cables and connection technologies.

Covering the complete range of IT & AV connectivity requirements, with full pre- and post-sales technical support, unbeatable customer service and expertise, Lindy is your ideal partner for connecting, sharing, converting and extending a wide array of digital and analogue signals.

PRODUCT RANGE

CONNECTING

Cable and adapter technology for the transmission of high-frequency IT & AV signals



SHARING

Innovative technologies of the latest generation for splitting & switching



CONVERTING

Converters and adapters for seamless integration of the latest and older IT & AV devices



EXTENDING

Redefining signal ranges with repeater and extender products



HDMI CABLES

HDMI HIGH SPEED HDMI CABLE, ANTHRA LINE

4K

- Professional choice High Speed HDMI cable, HDMI 2.0 compliant for commercial and high performance AV and IT installations
- Supports UHD resolutions up to 4096x2160@60Hz and HDTV resolutions up to 1080p
- Robust PVC housing, 24K gold plated connectors and contacts
- Triple shielded cable, corrosion resistant tinned copper 30AWG conductors

LENGTH	NO.	LENGTH	NO.
0.3m	36960	2.0m	36963
0.5m	36961	3.0m	36964
1.0m	36962	5.0m	36965

ULTRA HIGH-SPEED HDMI CABLE, ANTHRA LINE

8K

- Professional choice Ultra High Speed HDMI cable, HDMI 2.1 compliant, for commercial and high-performance AV and IT installations
- Supports resolutions up to 10240x4320 4:2:0 12bit
- Robust PVC housing, 24K gold plated connectors and contacts
- Triple shielded cable, corrosion resistant tinned copper 28AWG conductors

LENGTH	NO.
0.5m	36951
1.0m	36952
2.0m	36953
3.0m	36954



STANDARD HDMI CABLE, ANTHRA LINE

4K

- Superior performance and design Standard HDMI cable
- Supports UHD resolutions up to 4096x2160@60Hz 4:2:0 8bit
- Robust PVC housing, gold plated connectors and contacts
- Triple shielded cable, corrosion resistant bare copper 24AWG conductors
- HDMI 2.0 compliant, 3D, 4K, 10.2Gbps, HEC, ARC, CEC, Dolby® True HD, DTS-HD Master Audio, 10-year warranty



LENGTH	NO.
7.5m	36966
10m	36967
15m	36968
20m	36969

300m FIBRE OPTIC HDMI 4K60 DONGLE EXTENDER

4K

- Extends HDMI® signals up to 300m using a single simplex LC OM3 or OM4 multi-mode cable
- Supports UHD resolutions up to 4K@60Hz 4:4:4 8Bit
- Experience an expanded range of contrasts and colours with HDR (High Dynamic Range)
- Supports lossless HDMI® audio formats including Dolby Atmos & DTS-X

38392



ARMoured FIBRE OPTIC HYBRID HDMI 8K60 CABLE

8K

- Combines copper and fibre optic cable for a hybrid, long distance HDMI® connectivity solution
- Supports resolutions up to 4K@120Hz, 8K@60Hz
- HDR formats including Dolby Vision & HDR10+
- Aramid fibers and additional armored steel-spiral jacket to get a rugged and resistant cable structure

LENGTH	NO.	LENGTH	NO.
10m	38527	70m	38532
30m	38530	100m	38533
50m	38531		



ACTIVE HDMI 4K60 CABLE

- Creates a long-distance HDMI connection between a 4K source device and display
- Delivers reliable 4K@60Hz resolutions over longer cable distances
- Active HDMI technology built into the connector for flexible installation
- Full support for HEC, ARC and CEC compliant devices

LENGTH	NO.	LENGTH	NO.
10m	41071	25m	41074
15m	41072	30m	41075
20m	41073		


4K


FIBRE OPTIC HYBRID MICRO-HDMI 4K60 CABLE

4K

- Combines copper and fibre optic cable for a hybrid, long-distance HDMI, Micro-HDMI & DVI connectivity solution
- Supplied as a Micro-HDMI Male to Male cable, with data cable HDMI & DVI connectors
- Supports HDMI 2.0 18G resolutions up to 4K@60Hz with additional support for HDR
- Premium, metal connectors

LENGTH	NO.	LENGTH	NO.
10m	38320	50m	38324
20m	38321	70m	38325
30m	38322	100m	38326
40m	38323		



FIBRE OPTIC HYBRID HDMI 8K60 CABLE

- Combines copper and fibre optic cable for a hybrid, long-distance HDMI connectivity solution
- Supports resolutions up to 4K@120Hz, 8K@60Hz
- HDR formats including Dolby Vision & HDR10+
- Flexible and robust cable structure for any kind of installations

LENGTH	NO.	LENGTH	NO.
10m	38510	50m	38515
15m	38511	60m	38516
20m	38512	70m	38517
30m	38513	100m	38518
40m	38514		


8K


DISPLAYPORT CABLES


8K

DISPLAYPORT 1.4 CABLE, ANTHRA LINE

- Professional choice DisplayPort 1.4 cable for commercial and high-performance AV and IT installations
- Supports UHD resolutions up to 8K 7680x4320@60Hz 4:2:2 8bit including 4K 4096x2160@144Hz 4:2:2 10bit
- Robust ABS housing 24K gold plated connectors and contacts
- Triple shielded cable, corrosion resistant tinned copper 28AWG conductors
- DisplayPort 1.4, 8K 4K, 3D, 32.4Gbps, 10-year warranty

LENGTH	NO.	LENGTH	NO.
0.5m	36480	3.0m	36483
1.0m	36481	5.0m	36484
2.0m	36482		

DISPLAYPORT 1.2 CABLE, ANTHRA LINE

4K

- Professional choice DisplayPort 1.2 cable for commercial and high-performance AV and IT installations
- Supports UHD resolutions up to 4096x2160@60Hz 4:4:4 10bit
- Robust PVC housing, gold plated connectors and contacts
- Triple shielded cable, corrosion resistant tinned copper 26AWG conductors
- DisplayPort 1.2 compliant: 3D, 4K, 21.6Gbps, 10-year warranty

LENGTH	NO.
7.5m	36485
10m	36486



DISPLAYPORT 1.1 CABLE, ANTHRA LINE

- Professional choice DisplayPort 1.1 cable for commercial and high-performance AV and IT installations
- Supports resolutions up to 1920x1200@60Hz
- Robust PVC housing, gold plated connectors and contacts
- Triple shielded cable, corrosion resistant tinned copper 26AWG conductors
- DisplayPort 1.1 compliant: 10.8Gbps, 10-year warranty

LENGTH	NO.
15m	36487



ACTIVE DISPLAYPORT 1.2 CABLE

- Creates a long-distance connection between a DisplayPort source device and display
- Supports high quality resolutions up to 4K 60Hz
- In-built active chipset for reliable longer length DisplayPort transmission
- Bi-directional capability for more efficient, simpler installation

LENGTH	NO.
10m	41078
15m	41079


4K


FIBRE OPTIC HYBRID MINI DISPLAYPORT 1.4 CABLE WITH DETACHABLE DP CONNECTORS

- Combines copper and fibre optic cable for a hybrid, long-distance Mini DP & DP connectivity solution
- Supplied as a Mini DisplayPort male to male cable, with detachable DisplayPort connectors
- Supports DP 1.4 resolutions up to 8K@60Hz, 4K@120Hz with additional support for static and dynamic HDR
- No external power required

LENGTH	NO.	LENGTH	NO.
10m	38480	50m	38484
20m	38481	70m	38485
30m	38482	100m	38486
40m	38483		

8K


FIBRE OPTIC HYBRID DISPLAYPORT 2.0

- Combines copper and fibre optic cable for a hybrid, long-distance DisplayPort connectivity solution
- Supports resolutions up to 4K@144Hz, 8K@60Hz
- DP2.0 standard with UHBR10 support, 40Gbps bandwidth (4 lanes, 10Gbps per channel)
- Flexible and robust cable structure for any kind of installations

LENGTH	NO.	LENGTH	NO.
10m	38520	30m	38523
15m	38521	40m	38524
20m	38522	50m	38525


8K

**ACTIVE DISPLAYPORT TO
HDMI CABLE WITH HDR**

- Connects a DisplayPort equipped device to a 4K HDMI display or projector
- Supports high quality resolutions up to 4K@60Hz
- High Dynamic Range support provides deeper blacks, brighter whites and a wider colour gamut
- Active chipset for enhanced compatibility with various graphic cards

LENGTH	NO.
1.0m	40925
2.0m	40926
3.0m	40927
5.0m	40928



4K



HDMI TO DISPLAYPORT CABLE

- Connects an HDMI equipped device to a DisplayPort display
- Supports high quality resolutions up to 4K@60Hz
- Compliant with HDMI 2.0 and DisplayPort 1.2 specification
- High Dynamic Range support provides deeper blacks, brighter whites and a wider colour spectrum

LENGTH	NO.
1.0m	41498
2.0m	41499
3.0m	41500



PATCH CABLES

NETWORK CABLE

CAT.6

CAT.6 S/FTP	0.3m	0.5m	1m	1.5m	2m	3m	5m	7.5m	10m	15m	20m	30m
Grey	47700	47701	47702	47703	47704	47705	47706	47707	47708	47709	47710	47711
Blue	47715	47716	47717	47718	47719	47720	47721	47722	47723	47724	47725	47726
Red	47730	47731	47732	47733	47734	47735	47736	47737	47738	47739	47740	47741
Green	47745	47746	47747	47748	47749	47750	47751	47752	47753	47754	47755	47756
Yellow	47760	47761	47762	47763	47764	47765	47766	47767	47768	47769	47770	47771
Black	47775	47776	47777	47778	47779	47780	47781	47782	47783	47884	47785	47786
White	47790	47791	47792	47793	47794	47795	47796	47797	47798	47799	47800	47801
Orange	47805	47806	47807	47808	47809	47810	47811	47812	47813	47814	47815	47816
Purple	47820	47821	47822	47823	47824	47825	47826	47827	47828	47829	47830	47831

NETWORK CABLE

CAT.6A

CAT.6A S/FTP LSZH	0.3m	0.5m	1m	1.5m	2m	3m	5m	7.5m	10m	15m	20m	30m
Grey	47130	47131	47132	47133	47134	47135	47136	47137	47138	47139	47140	47141
Blue	47145	47146	47147	47148	47149	47150	47151	47152	47153	47154	47155	47156
Red	47160	47161	47162	47163	47164	47165	47166	47167	47168	47169	47170	47171
Black	47175	47176	47177	47178	47179	47180	47181	47182	47183	47184	47185	47186
White	47190	47191	47192	47193	47194	47195	47196	47197	47198	47199	47200	47201
Yellow	47860	47861	47862	47863	47864	47865	47866	47867	47868	47869	47870	47871
Green	47675	47676	47677	47678	47679	47680	47681	47682	47683	47684	47685	47686

NETWORK CABLE

CAT.7 S/FTP LSZH

CAT.7 S/ FTP LSZH	0.3m	0.5m	1m	1.5m	2m	3m
Grey	47260	47261	47262	47263	47264	47265
Blue	47275	47276	47277	47278	47279	47280
Red	47290	47291	47292	47293	47294	47295
Green	47645	47646	47647	47648	47649	47650
Yellow	47660	47661	47662	47663	47664	47665
Black	47305	47306	47307	47308	47309	47310
White	47320	47321	47322	47323	47324	47325

CAT.7 S/ FTP LSZH	5m	7.5m	10m	15m	20m	30m
Grey	47266	47267	47268	47269	47270	47271
Blue	47281	47282	47283	47284	47285	47286
Red	47296	47297	47298	47299	47300	47301
Green	47650	47651	47652	47653	47654	47655
Yellow	47665	47666	47667	47668	47669	47670
Black	47311	47312	47313	47314	47315	47316
White	47326	47327	47328	47329	47330	47331



CONVERTERS & ADAPTERS

DISPLAYPORT 1.2 TO HDMI 4K60 ACTIVE CONVERTER

4K

- Connects a DisplayPort source to an HDMI 4K display or projector
- Supports resolutions up to 3840x2160@60Hz
- Audio pass-through if supported by the video source
- Active chipset for enhanced compatibility with various graphic cards

PRODUCTS

DisplayPort 1.2 to HDMI 4K60 Active Converter
Mini DisplayPort 1.2 to HDMI 4K60 Active Converter

NO.

41068
41069



DISPLAYPORT & MINI DISPLAYPORT CONVERTER

4K

- Converts a DisplayPort signal to HDMI, DVI or VGA
- Supported resolutions
HDMI 4K@60Hz [38297] 4K@30Hz [41028, 41035, 41039]
DP 4K@60Hz [41028, 38297, 4K@30Hz [41035]
VGA Full HD@60Hz [41028, 38297, 41035]
DVI 1920x1200@60Hz [all]
- Easily connects with a single legacy or modern display
- Compact, portable design

PRODUCTS

DisplayPort 1.2 to HDMI, DVI & VGA Active Converter
Mini DisplayPort to HDMI, DVI & VGA Converter

NO.

41028
41035



HDMI 2.1 EDID EMULATOR

- Continuously emulate HDMI EDID information
- Supports Resolutions up to 7680x4320@60Hz or 3840x2160@120Hz with additional support for HDR
- Uses Cloned Data or Pre-stored resolutions/timings
- Headless connection (No monitor connection required)

32119



DISPLAYPORT 1.4 EDID EMULATOR

- Continuously emulates DisplayPort EDID information
- Supports resolutions up to 7680x4320@30Hz or 3840x2160@144Hz, with additional support for HDR
- Uses Cloned Data or Pre-stored resolutions/timings
- Headless connection (No monitor connection required)

32118



HDMI TO DISPLAYPORT
CONVERTER

- Connects an HDMI source to a DP display
- Supports resolutions up to 3840x2160@60Hz [38327], and up to 7680x4320@60Hz [38329]
- High Dynamic Range support provides deeper blacks, brighter whites and a wider colour gamut enclosed USB cable for power supply

PRODUCTS	NO.
HDMI 4K60 to DisplayPort 1.2 Converter	38327
HDMI 8K60 to DisplayPort 1.4 Converter	38329



DISPLAYPORT 1.4 TO HDMI 8K
ACTIVE CONVERTER

8K

- Connects a DisplayPort 1.4 computer to an HDMI 8K display
- Supports resolutions up to 7680x4320@60Hz and 3840x2160@120Hz
- Audio pass-through if supported by the video source
- Active chipset for enhanced compatibility with various graphic cards



HDMI® TO USB TYPE C CONVERTER
WITH USB POWER

- Connects an HDMI® source to a USB Type C equipped display
- Supports resolutions up to 4K UHD 3840x2160@60Hz
- Supports 7.1 channel surround audio
- Integrated USB Power cable for use with low power HDMI sources



HDMI TO DISPLAYPORT,
DVI & VGA CONVERTER

- Converts HDMI signals into DisplayPort, DVI or VGA signals
- Supports Ultra HD resolutions 3840x2160@30Hz for DisplayPort and 1920x1200@60Hz for DVI/VGA
- Easily connects with a single legacy or modern display at any one time
- Quick and simple plug & play installation



USB TYPE C TO DISPLAYPORT
4K144 CONVERTER

- Converts a USB Type C port to a DP port
- Supports resolutions up to 4K 3840x2160@144Hz
- Requires DisplayPort Alternate Mode support by the USB Port/Bus
- Plug & Play, no drivers required





43355


4K

43339

USB TYPE C CONVERTER

- Requires DisplayPort Alternate Mode support by the USB Port/Bus
- Supported resolutions
43355: 1920x1200@60Hz, **43339:** 3840x2160@60Hz
43337: 7680x4320@60Hz, **43327:** 7680x4320@60Hz
- Plug & play, no drivers required

PRODUCTS	NO.
USB Type C to VGA Converter	43355
USB Type C to HDMI 4K60 Converter	43339
USB Type C to DisplayPort 8K60 Converter	43337
USB Type C to HDMI 8K60 Converter	43327



43337



43327

8K
8K

ADAPTERS

PRODUCTS	NO.
Mini DP to DP Adapter	41089
HDMI Female to DVI-D Male Adapter	41228
DVI-D Female to HDMI Male Adapter Cable, 0.2m	41227
USB 3.2 Type A to C Adapter	41904
USB 3.2 Type C to A Adapter	41899



41228



41899



41904



41227



41089

USB PRODUCTS

USB TYPE C - HDMI 4K VIDEO CAPTURE CARD

- Captures and record 4K@30Hz resolution video and audio from HDMI® source devices
- Input and Loop-Out port support resolutions up to 4K@60Hz
- Captures WQHD and FullHD resolutions with 60Hz
- Easy plug and play set up with USB Type-C connection

43377



USB 3.2 CABLE TYPE A TO A, 5Gbps, ANTHRA LINE

- Professional choice USB 3.2 Gen 1 Type A to A cable for commercial and high-performance AV and IT installations
- USB SuperSpeed 5Gbps
- Robust PVC housing, gold plated connectors and contacts
- Triple shielded cable, corrosion resistant tinned copper conductors

LENGTH	NO.
0.5m	36750
1.0m	36751
2.0m	36752
3.0m	36753
5.0m	36754



USB 3.2 CABLES TYPE A TO MICRO-B, 5Gbps, ANTHRA LINE

- Professional choice USB 3.2 Gen 1 Type A to Micro-B cable for commercial and high-performance AV and IT installations
- SuperSpeed USB (5Gbps)
- Robust PVC housing, gold plated connectors and contacts
- Triple shielded cable, corrosion resistant tinned copper conductors

LENGTH	NO.
0.5m	36765
1.0m	36766
2.0m	36767
3.0m	36768



USB 3.2 CABLE TYPE A TO B, 5Gbps, ANTHRA LINE

- Professional choice USB 3.2 Gen 1 Type A to B cable for commercial and high-performance AV and IT installations
- USB SuperSpeed USB 5Gbps
- Robust PVC housing, gold plated connectors and contacts
- Triple shielded cable, corrosion resistant tinned copper conductors

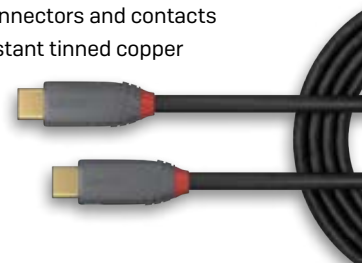
LENGTH	NO.
0.5m	36740
1.0m	36741
2.0m	36742
3.0m	36743
5.0m	36744



USB 3.2 TYPE C TO C CABLE, 20Gbps, 5A, PD, ANTHRA LINE

- Professional choice USB 3.2 Gen 2x2 Type C to C, 5A (100W), cable for commercial and high-performance AV and IT installations
- SuperSpeed USB 20Gbps - supports data transfer speeds up to 20Gbps, Power Delivery and DisplayPort Alternate Mode
- Robust PVC housing, gold plated connectors and contacts
- Triple shielded cable, corrosion resistant tinned copper conductors

LENGTH	NO.
0.5m	36900
1.0m	36901
1.5m	36902
2m	36903



ACTIVE EXTENSION

- Supports transfer rates up to 5Gbps
- Active USB Extensions for different connector types
- Plug & play

PRODUCTS

	NO.
5m USB 3.0 Active Extension	43155
5m USB 3.2 Gen 1 C/C Active Extension	43271
5m USB 3.0 Active Extension Slim	43401
8m USB 3.0 Active Extension Slim	43402
10m USB 3.0 Active Extension Slim	43403
15m USB 3.0 Active Extension Slim	43404



43155



43401-4



43271

USB 3.0 ACTIVE EXTENSION PRO

- Supports transfer rates up to 5Gbps
- Cascadable up to 40m
- Plug & Play



LENGTH	NO.
8m	43158
10m	43157
15m	43229
20m	43361
30m	43362
Hub 10m	43159



43159

5m USB 3.2 10GBPS C/C ACTIVE EXTENSION PRO

- High performance, active cable that provides an extended 5m connection between a computer with USB Type C port and a USB Type C device
- Cascadeable up to a maximum distance of 15m
- Supports the full USB 3.2 / 3.1 Gen 2 bandwidth for speeds of 10Gbps
- USB Power Adapter cable included

43405



HUB USB

- Supports transfer rates up to 5Gbps or 10Gbps

PRODUCTS

	NO.
5m USB 3.0 Hub, 4 Ports 8m	43388
7 Port USB 3.2 Gen 2 Metal Hub	43275
4 Port USB 3.0 Hub with 3 Quick Charge 3.0 Ports	43371
USB 3.2 Gen 1 Hub & Gigabit Ethernet Converter	43379



43371



43388



43275



43379

USB 3.2 TYPE A TO C CABLE 10Gbps, 5A, PD, ANTHRA LINE

- Professional choice USB 3.2 Gen 2 Type A to C, 5A (100W), cable for commercial and high-performance AV and IT installations
- USB SuperSpeed 10Gbps
- Robust PVC housing, 24K gold plated connectors and contacts
- Triple shielded cable, corrosion resistant tinned copper conductors



LENGTH	NO.
0.5m	36910
1.0m	36911
1.5m	36912
2.0m	36913
3.0m	36919

ACTIVE USB 3.2 GEN 2 C/C CABLE

- USB 3.2 Gen 2 Active Cable for data and video extension
- Data transfer rates up to 10Gbps
- Supports DisplayPort 1.4 Alternate Mode and video resolutions up to UHD 8K 7680x4320@60Hz including 4K 4096x2160@120Hz
- Supports Power Delivery up to 100W (20V 5A)

LENGTH	NO.
3.0m	43348
5.0m	43308



USB 3.2 TYPE A TO C CABLE 10Gbps, BLACK LINE

- Entry level USB 3.2 Gen 2 Type A to C cable for home and small office applications
- USB SuperSpeed 10Gbps
- Robust PVC housing, nickel connectors, gold plated contacts
- Triple shielded cable, corrosion resistant tinned copper conductors

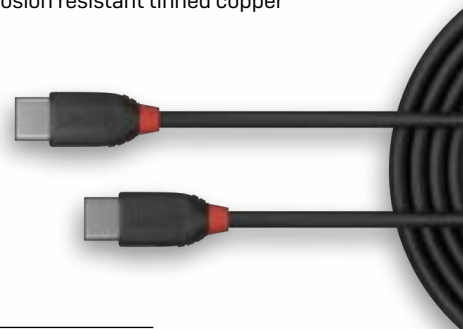


LENGTH	NO.
0.15m	36914
0.5m	36915
1.0m	36916
1.5m	36917

USB 3.2 TYPE C TO C CABLE 20Gbps, BLACK LINE

- Entry level USB 3.2 Gen 2x2 Type C to C, 3A (60W), cable for home and small office applications
- SuperSpeed USB 20Gbps - supports data transfer speeds up to 20Gbps and DisplayPort Alternate Mode
- Robust PVC housing, nickel plated connectors, gold plated contacts
- Triple shielded cable, corrosion resistant tinned copper conductors

LENGTH	NO.
0.5m	36905
1.0m	36906
1.5m	36907



USB 3.2 GEN 2 & DP 1.4 TYPE C HYBRID CABLE

- USB 3.2 Gen 2 & DP 1.4 Type C Hybrid Cable for data and video extension
- Data transfer rates up to 10Gbps
- Supports DisplayPort Alternate Mode and DP 1.4 (4 lanes) with video resolutions up to 4K 3840x2160@144Hz or 8K 30Hz
- Supports Power Delivery up to 60W (20V 3A)



LENGTH	NO.
10m	43398
15m	43399

USB 3.2 GEN 1 & DP 1.4 TYPE C HYBRID CABLE

- 10m USB 3.2 Gen 1 & DP 1.4 Type C Hybrid Cable for data and video extension
- Data transfer rates up to 5Gbps
- Supports DisplayPort Alternate Mode and DP 1.4 (2 lanes) with video resolutions up to 4K 3840x2160@30Hz
- Supports Power Delivery up to 60W (20V 3A)

LENGTH	NO.
10m	43333



SPLITTERS / SWITCHES / MATRIX AV

HDMI SPLITTER

4K

- Splits a single HDMI 2.0 source across 2 HDMI displays
- Supports resolutions up to 4K@60Hz 4:4:4, with additional support for HDR
- HDCP 2.2 for enhanced compatibility with 4K content
- EDID Management for hassle free installation

PRODUCTS

	NO.
2 Port HDMI 4K60 Splitter	38235
4 Port HDMI 4K60 Splitter	38236
8 Port HDMI 4K60 Splitter	38237
16 Port HDMI 4K60 Splitter	38239
2 Port HDMI 8K60 Splitter with Audio & Downscaling	38534
4 Port HDMI 8K60 Splitter with Audio & Downscaling	38535



70m CAT.6 4 PORT HDMI 4K60 & IR SPLITTER EXTENDER

- Distributes 4K HDMI signals to up to 4 displays in multiple locations
- Supports resolutions up to 4K@60Hz, with additional support for HDR
- Features a loop-through HDMI output on the transmitter for local monitoring or cascading for larger installs
- Supports Power over Cable (PoC) to the receivers, only a single power supply is required for operation

LENGTH	NO.
70m	38262

DISPLAYPORT 1.2 MST HUB

- Expands or duplicate the desktop or display independent DP/Mini DP signals over dual DP monitors
- Compatible with various graphics cards including AMD Eyefinity, NVIDIA Surround and Intel Collage
- Supports resolutions up to 4K 30Hz, and audio up to 7.1CH

PRODUCTS

	NO.
2 Port DisplayPort 1.2 MST Hub	38430
4 Port DisplayPort 1.2 MST Hub	38431
Mini DisplayPort to 2 Port HDMI MST Hub	38432
DisplayPort to 2 Port HDMI MST Hub	38433



HDMI SWITCHES

- Switches between 3 HDMI source devices when connected to a single display


4K

2 Port Dual Head HDMI 4K60,
USB 3.0 KVM Switch

39314

4K

4 Port HDMI 4K60 Switch with Audio

38249

4K

5 Port Seamless Presentation Switch HDBaseT
Extender - Transmitter

38338


5 Port Seamless Multiview KVM Switch

32330

4K

5 Port HDMI 4K60 Switch

38233


9 Port HDMI 4K30
Multi-View Switch

38330

8K

2 Port HDMI 8K60
Bi-Directional Switch

38339

4X4 HDMI 4K60 MATRIX WITH VIDEO WALL SCALING

- Switches between 4 HDMI® source devices and 4 HDMI® displays as a professional matrix
- Creates classic video walls (up to 2x2) or vertical video walls (4x1)
- Controls output scaling to ensure the optimum or consistent resolution is shown

4K
38238


SEAMLESS MULTI-VIEW 4X4 HDMI 4K60 MATRIX WITH SCALER FOR SCREEN WALL

- Switches between 4 HDMI® source devices and 4 HDMI® displays as a professional matrix.
- Creates classic video walls from 9 different models)
- Switches seamlessly between devices in less than 0.1 ms.
- Choose from 16 different multi-view presentations

4K
38390


16X16 HDMI 4K60 MATRIX

- Switches between 16 HDMI® source devices and 16 HDMI® displays connected simultaneously
- Supports resolutions up to 4K 60Hz, with additional support for HDR
- Allows for flexible and convenient switching between 16 HDMI® sources, perfect for commercial and professional settings
- Easy to use and set up, with an intuitive Web Gui, Remote Control or Push Buttons

4K
38359


8x8 HDMI 4K60 MATRIX

- Switches between 8 HDMI source devices and 8 HDMI displays connected simultaneously
- Supports resolutions up to 4K 60Hz with additional support for HDR
- Allows for flexible and convenient switching between 8 HDMI sources, perfect for commercial and professional settings
- Easy to use and set up, with an intuitive Web Gui, Remote Control or Push Buttons

4K
38334


EXTENDERS

HDMI EXTENDER

- An HDMI loop-through output creates an additional viewing zone with a local display
- Supports resolutions up to 3840x2160@60Hz 4:4:4 8bit, with support for HDR
- PoC (Power over Cable) functionality for power from a single power supply

38205



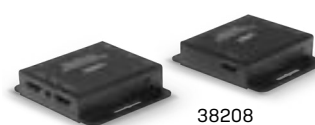
4K

PRODUCTS

50m Cat.6 HDMI 4K60 & IR Extender with PoC & Loop Out
70m Cat.6 HDMI 4K30 & IR Extender with PoC & Loop Out

NO.

38205
38208



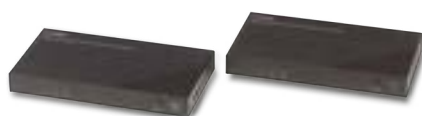
38208

HDBaseT EXTENDER

- ARC Support as well as RS-232, CEC & Ethernet pass-through & bi-directional IR for simple control
- Supports PoC (Power over cable), requiring a power supply connection from only one side of the installation



4K



100m Cat.6 HDMI 4K60, Audio,
IR & RS-232 HDBaseT Extender

38340

4K



100m Cat.6A HDMI 4K60, Audio,
IR & RS-232 HDBaseT 3.0 KVM Extender

38344

4K



100m Cat.6 HDMI 4K60, Audio,
IR & RS-232 HDBaseT Transmitter

38341



70m Cat.6 HDMI 4K30, IR & RS-232 HDBaseT
Extender with PoC

38139

4K



100m Cat.6 HDMI 4K60, Audio,
IR & RS-232 HDBaseT Receiver

38342

**HDMI & IR OVER IP
EXTENDER**

- Distributes HDMI signals 1-1 or 1-many as part of a networked installation
- Supports resolutions up to 1920x1080@60Hz
- Adds additional receivers to the network for larger scale distribution



**HDMI & IR OVER IP
EXTENDER - RECEIVER**

- Adds additional HDMI over IP receivers to No. 38398 to create larger networked distribution setups
- Simple, scalable solution for developing 1-to-many installations
- Supports resolutions up to 1920x1080@60Hz



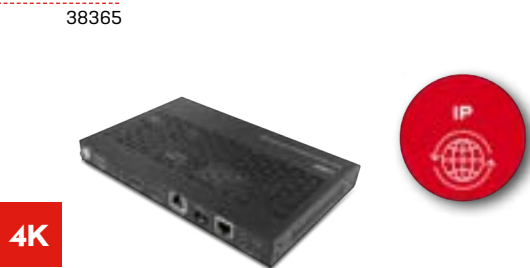
SDVoE CONTROLLER

- Enables the management and configuration of multiple Video over IP SDVoE extender No.38365 through a single WebGUI
- Dual network ports, one for network control and one for multicast video distribution
- Supports PoE, I/O level output and voltage 5V or 12V



**4K60 HDMI & USB SDVoE
EXTENDER - TRANSCEIVER**

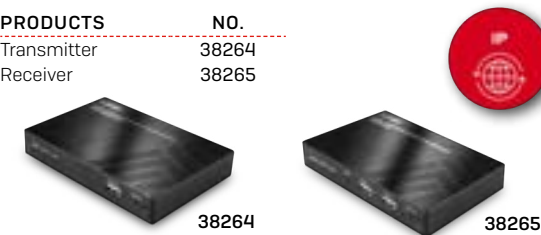
- Supports uncompressed resolution up to 4K@60Hz 4:4:4 with HDR10 and no latency
- Encoder or Decoder mode
- Automatic detection of Fiber and Copper connection
- Supports PoE and Multicast, Video Wall and Multiview configurations



KVM OVER IP EXTENDER

- Extends HDMI 4K30, USB HID and IR Over an IP network
- Supports point to point and point to multipoint installation up to 150m (492.12ft)
- HDMI 1.4 & HDCP 1.4 compliant
- Requires a Gigabit Ethernet (1000BaseT) compliant network for multipoint installation

PRODUCTS	NO.
Transmitter	38264
Receiver	38265



4K30 HDMI & USB OVER IP SYSTEM

- Supports resolutions up to 3840x2160@30Hz 4:4:4 8bit
- Point-to-point, matrix, KVM and video wall applications, via IP
- Simple control via Web GUI, TCP, IR, RS-232 and PLC PoE support

PRODUCTS	NO.
Controller	38395
Encoder	38396
Decoder	38397



70M CAT.6A HDMI 4K60 & TYPE C HDBASET 3.0 KVM EXTENDER

- Sends uncompressed HDMI® resolutions up to 70m over Cat.6A network cable via HDBaseT 3.0 technology
- Supports HDMI® 18G resolutions up to 4K@60Hz 4:4:4, with additional support for HDR
- Type C input supporting DisplayPort Alternate mode, USB 2.0 and 60W charging power
- Supports USB 2.0, de-embedded Audio, RS-232, bi-directional IR and PoC (Power over Cable)

38346



150M CAT.6 HDMI 4K60 & TYPE C HDBASET EU WALL PLATE KVM EXTENDER, TRANSMITTER

- Sends HDMI® or Type C signals up to 150m over Cat.6 network cable via HDBaseT technology with Long Reach mode
- Supports HDMI 18G resolutions up to 4K@60Hz 4:4:4, with additional support for HDR
- Supports USB 2.0, Audio, RS-232, bi-directional IR and PoC (Power over Cable)
- EU standard 1-gang wall plate (86x86mm)

38388



100M 2 PORT USB 2.0 CAT. 6 EXTENDER

- Extends 2 USB 2.0 ports up to 100m using low cost Cat. 6 network cable (not included)
- Bi-directional PoC (Power over Cable) requires a power supply connection from only one side of the installation
- Supports USB 2.0 High Speed and USB 1.1 Full Speed / Low Speed
- Plug & Play installation

43408



150M CAT.6 HDMI 4K60, IR, RS-232 & AUDIO HDBASET KVM EXTENDER, RECEIVER

- Distributes HDMI® resolutions up to 150m over Cat.6 network cable via HDBaseT technology with Long Reach mode
- Supports HDMI® 18G resolutions up to 4K@60Hz 4:4:4, with additional support for HDR
- Supports USB 2.0, Audio, RS232 and bi-directional IR for control
- Supports PoC (Power over cable), requiring a power supply connection from only one side of the installation

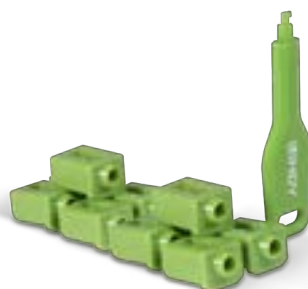
38389



PORT BLOCKERS

SFP PORT BLOCKER

- Quickly and easily block physical access to SFP Network ports
- Prevents users from inserting cables, devices or foreign objects without permission
- Single key and 10 x SFP blockers
- Individual keys and pack of 20 blockers also available

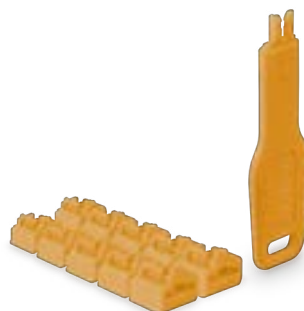


GREEN

Pack	47912
Lock	47913
Key	47911

RJ45 PORT BLOCKER

- Quickly and easily block physical access to RJ-45 Network ports
- Prevents users from inserting cables, devices or foreign objects without permission
- Single key and 10 x RJ-45 blockers
- Individual keys and pack of 20 blockers also available



	BLACK	GREEN	ORANGE	YELLOW
Pack	47891	47894	47897	47900
Lock	47892	47895	47898	47901
Key	47890	47893	47896	47899

USB TYPE A PORT BLOCKER

- Physically prevent access to a USB Type A Port
- Quick and simple to use
- Single key & 4 Type A Blockers
- Pack of 10 blockers (without key) or individual keys are also available



	PINK	GREEN	BLUE	ORANGE	WHITE
Pack	40450	40451	40452	40453	40454
Lock	40460	40461	40462	40463	40464
Key	40620	40621	40622	40623	40624

USB TYPE C PORT BLOCKER

- Physically prevent access to a USB Type C / Thunderbolt 3 Port
- Quick and simple to use
- Single key & 4 Type C Blockers
- A pack of 10 blockers (without key) are also available



	PINK	GREEN	WHITE	ORANGE	BLUE
Pack	40425	40426	40427	40428	40465
Lock	40437	40438	40439	40440	40466

DOCKING STATIONS

DST-PRO USB4

- Supports 8K 30Hz for a single screen or 4K 60Hz for two screens (using DP MST)
- Integrated hub with 4 USB 3.2 10 Gbps ports
- 4 x USB 3.2 Gen 2 [2 x Type C, 1 x Type A], 2 x USB 2.0 [Type A], Gigabit Ethernet, Analogue Audio, SD Card Reader

43372

8K



DST-PRO 5K XT

- Supports 5K@60Hz (DisplayPort) and 4K@60Hz (HDMI) for single and dual display options
- Supports 1x 4K@60Hz and 2x 4K@30Hz for triple displays
- USB 3.2 5Gbit/s
- 3 x USB Type A, 1 x Type C, RJ-45, Micro-SD & SD Reader, Audio

43349

5K



DST-PRO UNIVERSAL

- Supports 4K@60Hz for single display option
- Supports 1x 4K@30Hz & 2x 4K@60Hz for triple displays
- 3 x HDMI, 2 x DisplayPort
- USB 3.2 10Gbit/s
- 3 x USB type A, 2 x type C, RJ-45, Audio

43366

4K



2 PORT TYPE C MST KVM DOCKING STATION

- Controls two USB-C source devices - ideal for desktop and conference room applications.
- Both sources can use the connected USB devices [5 Gbit/s per port].
- Supports 1x 4K@60Hz & 1x 4K30 + 1x 1080p for dual displays
- Dual USB Power Delivery 3.0 [100W + 65W]
- 3x USB Type A, 3x USB-C [1 for PD], RJ-45, Audio

43202

4K



DST-MINI XT 810

- Connects an HDMI® and/or DisplayPort display, USB devices and power using a single connected cable
- Supports 8K 30Hz for a single display or 4K 60Hz for two displays (MST)*.
- Integrated SuperSpeed 10Gbit/s 3-port USB hub [2 x Type A, 1 x Type C]
- USB Power Delivery compatible up to 100W

43392

8K



DST-PRO 101

- Connects one DisplayPort and/or up to two HDMI® displays, USB peripherals and power with a single cable
- Supports 4K 3840x2160 60Hz for one or 2560x1440 60Hz for two displays
- Includes a 4-port (3x Type A, 1x Type C) SuperSpeed 5Gbit/s USB hub
- 100W power supply included for charging the laptop while using the DST-Pro 101

 43378

4K


DST-MINI

- Adds two USB Type A ports, an HDMI® port, Gigabit Ethernet and a Power Delivery port to your notebook
- Supports 4K 3840x2160 60Hz for an HDMI® display
- Features DisplayPort Alternate Mode
- USB Power Delivery (PD 3.0 up to 100W) to charge the laptop while using the DST Mini

 43358

4K


DST-MINI DUO

- Connects 2 HDMI® displays, USB peripherals, Gigabit Ethernet and power over a single cable
- Supports 8K 30Hz or 4K 120Hz for a single display and 4K for two displays (MST)*
- Integrated 3 port USB SuperSpeed 10Gbps Hub (2 x USB Type A, 1 x Type C) and 3port 5Gbps Hub
- USB Power Delivery capable up to 100W

 43373

4K


CHARGERS / ACCESSORIES

USB CHARGER

- Fast charging for smartphones, tablets and other mobile devices.
- Compact design and lightweight for maximum mobility
- Built-in safety features such as overvoltage and overcurrent protection

PRODUCTS	NO.
20W USB Type C GaN Charger	73410
18W USB Type A Charger	73412
20W USB Type A & C Charger	73413
30W USB Type A & C Charger	73424



65W USB GAN CHARGER

- Charges and powers a device via one USB Type C port
- 65W GaN technology provides fast charging for smartphones, tablets, laptops and other mobile devices
- Compact design and lightweight for maximum mobility
- Built-in safety features such as overvoltage and overcurrent protection

PRODUCTS	NO.
65W USB Type C GaN Charger	73426
65W USB Type A & C GaN Charger	73428



100W 4-PORT USB TYPE A & C GAN CHARGER

- Charges and powers multiple devices simultaneously via multiple USB Type C and USB Type A ports
- 100W Power Delivery via the USB Type C ports provide fast charging for smartphones, tablets, laptops and other mobile devices
- Compact design for maximum mobility
- Built-in safety features such as overvoltage and overcurrent protection



73441

USB CHARGING STATION

- Simultaneous charging of several devices
- Smart charging feature adjusts current for optimal, safe charging
- Supports Battery Charging Standard 1.2 for fast charging & Apple's charging protocol

PRODUCTS	NO.
96W 10 Port USB Charging Station	73309
120W 10 Port USB Charging Station - 8 USB A ports and 2 USB C ports	73435
160W 6 Port USB Charging Station - 3 USB A ports and 3 USB C ports including 1 140W port, supports Power Delivery 3.0	73436



5V 2.4A
3x USB A

30W
2x PD

140W
1x PD

UNDER DESK CPU HOLDER

- With 360° swivelling action and can be pulled from under the desk up to 140mm
- Holds a maximum weight of 30kgs
- Suitable for any work surface with a thickness of 15mm and above
- Suitable for computer measuring: (WxDxH) 160-220 x 450 x 340-490mm approx

40284



DUAL MOUNT DESKTOP GAS SPRING ARM - BLACK

- Offers freedom of movement for up to two display monitors, creating an optimum viewing experience
- Integrated cable management helping to create a clean and tidy workstation
- Easy installation by tightening the supplied C Clamp to any desk
- VESA Compliant of both 75x75 and 100x100mm

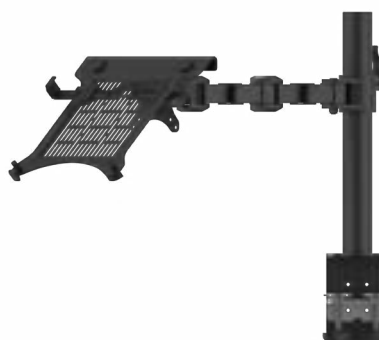
40708



LAPTOP/NOTEBOOK DISPLAY ARM

- Desk-mountable arm with notebook and display plate
- Display plate supports VESA standards 75 x 75mm and 100 x 100mm
- Height adjustable: 200mm - 340mm
- Supports a maximum weight: 10kg (22.04lb)

40982



L118 WIRELESS OFFICE HEADSET

- Compatible with Microsoft Teams, Zoom and other meeting applications
- Wireless office headset with charging base
- AI Noise cancelling Microphone
- Lightweight and Adjustable

20450



NEW PRODUCTS

300M 2 PORT FIBRE OPTIC USB 3.0 EXTENDER

- Extends USB 3.0 connections for two USB devices (Type A and Type C) up to 300m
- Supports data transfer rates up to 5Gbps, backwards compatible with USB 2.0 devices
- Uses standard ,off the shelf' LC duplex fibre cabling
- Resistant to RF & EM Interference for use in highly sensitive areas



43363

100M CAT.6A USB 3.2 GEN 1 HDBASET EXTENDER

- Extends 4 USB 3.2 Gen 1 ports up to 100m using Cat.6A network cable (not included)
- Power over Cable requires a single power supply to be connected to the transmitter or receiver only
- Supports USB 3.2 Gen 1 (USB 3.0) up to 5Gbps, USB 2.0/1.1 backwards compatibility, RS232 and FSYNC pass-through ports
- Plug & Play installation



43410

USB4 NVME M.2 SSD ENCLOSURE

- Aluminium Enclosure for PCIe/NVMe based M.2 SSDs (not included)
- USB4 standard with extremely fast 40Gbps data transfer rates*
- Aluminium housing with Aluminium heatsink for excellent heat dissipation, ensuring a suitable operating temperature
- Plug & Play, no drivers required



43394

**4X1 HDMI 4K60 MULTIVIEW
SEAMLESS SWITCH**

- Full 4K60Hz input and output for multiple sources on a single display
- Supports 4 Display modes: Quadview, Picture In Picture, Dual Video and Standard
- Controls Via RS232, IR Remote Control and Front Panel
- Seamless switching between Audio and Video signals

38228



**4X4 USB 3.2 GEN 1
MATRIX SWITCH**

- Supports USB 3.2 Gen 1 (USB 3.0), USB 2.0/1.1 backwards compatibility
- Switching between computers with buttons, TCP/IP with web GUI or RS-232 commands
- Matrix switch with presets function
- Plug & Play, no software required,

43406



**USB 3.2 GEN 1 TYPE A TO C
HYBRID CABLE**

- Active Optical USB 3.2 Gen 1 Cable, backwards compatible with USB 2.0
- Supports transfer rates up to 5Gbps, backwards compatible with USB 2.0 devices
- Aramid fibers for a robust cable structure
- Low RFI/EMI for sensitive environments

LENGTH	NO.
10m	43395
25m	43396
50m	43397



**100M CAT.6A 2 HOST USB 3.2 GEN 1
HDBASET EXTENDER**

- Extends USB 3.2 Gen 1 signals from 2 hosts up to 100m using Cat.6A network cable (not included)
- Power over Cable requires a single power supply to be connected to the transmitter or receiver only
- Supports USB 3.2 Gen 1 (USB 3.0) up to 5Gbps, USB 2.0/1.1 backwards compatibility, RS232, APIs and FSYNC pass-through ports
- Plug & Play installation

43421



**100M MPO FIBRE OPTIC HDMI 8K60 EXTENDER
[WITH MEDICAL CERTIFICATIONS]**

- Extends HDMI® signals up to 100m using a Type A MPO OM3 multimode 12x50/125µm fibre optic cable (not included)
- Supports UHD resolutions up to 8K@60Hz
- Supports 48Gbps bandwidth (4*12Gbps), lossless HDR and multi-channel audio formats
- Low EMI and low power consumption for medical and industrial environments

38360



**100M CAT.6A USB 3.2 GEN 1 & HDMI 4K60
HDBaseT EXTENDER**

- Extends USB 3.2 Gen 1 and AV signals from 2 Type C hosts up to 100m using Cat.6A network cable (not included)
- Type C Power Delivery 100W port on the Tx, DisplayLink technology for video over USB on dual HDMI 4K60 outputs on the Rx
- Supports USB 3.2 Gen 1 (USB 3.0) up to 5Gbps, USB 2.0/1.1 backwards compatibility, RS232, APIs, Audio and FSYNC pass-through ports

39365





scan here
to download
the brochure

Lindy and the Lindy logo are registered trademarks of The Lindy Group in France and other countries.
Other trademarks are the property of their respective owners. Technical modifications and other reservations.
The contents of this brochure have been created with the utmost care. No liability or guarantee is accepted for
the completeness or accuracy of the information. This brochure does not constitute a contractual offer information
only (non-binding). © Lindy Group