

PORT BLOCKERS

PROTECT. PREVENT. PRESERVE.

Physical first level security
solutions for IT & AV hardware
interfaces & systems.

“THERE ARE
ONLY TWO
TYPES
OF COMPANIES -
THOSE THAT
KNOW THEY’VE
BEEN
COMPROMISED
AND THOSE
THAT DON’T
KNOW.”

Dmitri Alperovitch, Cyber Security Expert
& Co-Founder of CrowdStrike

DATA SECURITY SOLUTIONS

THE BENEFITS OF PHYSICAL DATA PROTECTION

Data security solutions provide users with the tools to help prevent security compromises and deter unauthorised users from accessing ports that provide essential functionality to an application or store sensitive data that needs to remain confidential or secure.

There are a variety of ways to secure data digitally: like firewalls, anti-virus programs and bespoke security software, however physical blockers can be just as important in keeping data safe from compromise. Port blockers are visual deterrents that seamlessly fit into a variety of environments and provide a physical barrier to unauthorised access.

1 STRENGTHEN SECURITY

Port blockers serve as a great visual deterrent for threats to data. Plug these simple devices into a corresponding port and stop unauthorised users from inserting devices that could compromise security or data.

2 USER FRIENDLY

Quick and easy deployment allows multiple ports to be blocked and managed easily by system administrators. No training or software is required for installation and once installed the port blockers require virtually no maintenance.

3 EFFICIENT & SCALABLE

Low installation costs facilitate gradual deployment across an installation as budget allows. With virtually no maintenance costs and additional keys and locks available, these devices provide almost unlimited scalability.

4 SECURITY IN DEPTH

Combined with software solutions such as specialist programs and BIOS restrictions, port blockers provide an added layer of defence against data theft and compromises.

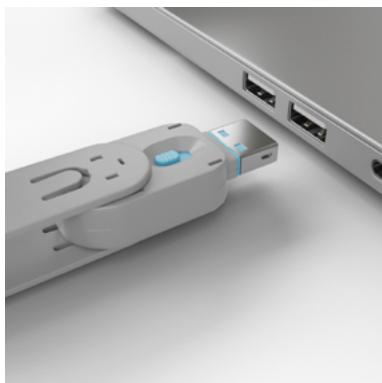
USB PORT BLOCKERS

TYPE C & TYPE A

USB Port Blockers are useful little devices that system administrators can use to physically prevent access to USB ports. USB Port Blockers allow locks to be inserted and removed from USB ports to stop unauthorised users from inserting pen drives, USB mass storage and mobile devices into shared workstations or devices with USB ports in public spaces.

QUICK GUIDE

FOR USING USB PORT BLOCKERS



01 A lock is attached to the key and inserted into a USB port.



02 The sliding mechanism on the key is then released leaving the lock in place.



03 To remove the lock, the key is inserted into the lock and pulled back. Simple!

APPLICATION EXAMPLES
FOR COMPATIBLE DEVICES
WITH USB C & USB A PORTS

- ▼ Protect laptops from unauthorised access in workplaces.



- ▼ Block ports on office PCs to help label unused ports or deny access.



- ▲ Block access to USB ports on professional AV and IT systems, e.g. servers, matrices and switches.



- ▲ Prevent tablets that are left in public environments, e.g. points of sales and classrooms, from being plugged in by unauthorised third parties.

USB TYPE C

The Type C Port Blocker Set allows locks to be inserted and removed from USB Type C ports. Available as a pack of 10 locks, or as a set of 1 key and 4 locks in a variety of colours.



PACK OF 4 LOCKS WITH 1 KEY
AVAILABLE IN SETS OF PINK,
GREEN, WHITE, ORANGE, BLUE



No. 40425



No. 40426



No. 40427



No. 40428



No. 40465

PACK OF 10 LOCKS WITHOUT KEY
AVAILABLE IN PINK, GREEN,
WHITE, ORANGE, BLUE



No. 40437



No. 40438



No. 40439



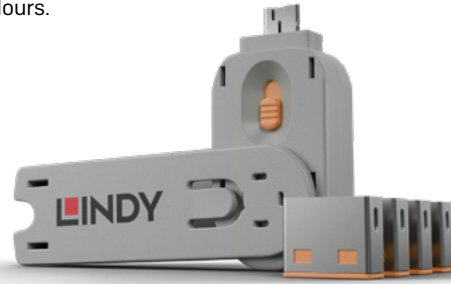
No. 40440



No. 40466

USB TYPE A

The Type A Port Blocker Set allows locks to be inserted and removed from USB Type A ports. Available as a single key, a pack of 10 locks, or as a set of 1 key and 4 locks in a variety of colours.



PACK OF 4 LOCKS WITH 1 KEY

AVAILABLE IN SETS OF PINK, GREEN, BLUE, ORANGE, WHITE



No. 40450

No. 40451

No. 40452

No. 40453

No. 40454

PACK OF 10 LOCKS WITHOUT KEY

AVAILABLE IN PINK, GREEN, BLUE, ORANGE, WHITE



No. 40460

No. 40461

No. 40462

No. 40463

No. 40464

KEY WITHOUT LOCKS

AVAILABLE IN PINK, GREEN, BLUE, ORANGE, WHITE



No. 40620

No. 40621

No. 40622

No. 40623

No. 40624

HDMI®

The HDMI® Port Blockers are useful little devices that can be used to physically prevent access to HDMI® ports. With the HDMI® Port Blocker Key, the user can quickly block any open device ports and easily prevent users from connecting cables, devices or inserting foreign objects without permission. Available as a pack of 10 locks, or as a set of 1 key and 4 locks.



PACK OF 4 LOCKS WITH 1 KEY
AVAILABLE IN SETS OF BLUE

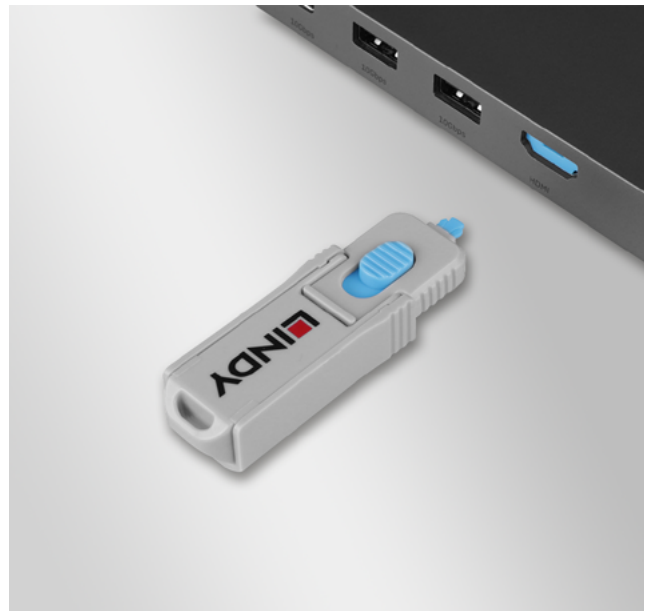
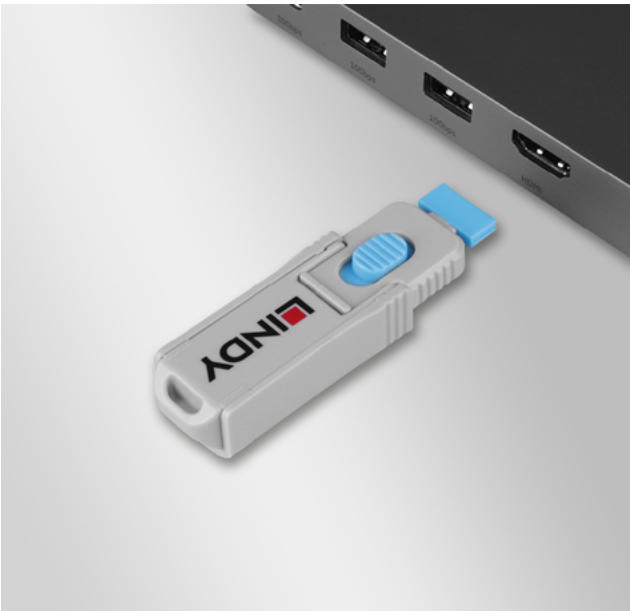


No. 40320

PACK OF 10 LOCKS WITHOUT KEY
AVAILABLE IN BLUE



No. 40321



DISPLAYPORT™

The DP Port Blockers are useful little devices that can be used to physically prevent access to DP ports. With the DP Port Blocker Key, the user can quickly block any open device ports and easily prevent users from connecting cables, devices or inserting foreign objects without permission. Available as a pack of 10 locks, or as a set of 1 key and 4 locks.



PACK OF 4 LOCKS WITH 1 KEY
AVAILABLE IN SETS OF BLUE



No. 40324

PACK OF 10 LOCKS WITHOUT KEY
AVAILABLE IN BLUE



No. 40325

▼ Protect DisplayPort™ ports from unauthorized access on desktop computers.



◀ Denies user access to DisplayPort™ ports on laptops.



RJ-45 PORT BLOCKER

RJ-45 Port Blockers can be used to easily block open network ports and prevent users from connecting cables, devices or inserting foreign objects without permission. RJ-45 ports are ubiquitous in networked environments, by blocking these ports there is a first line of network security against viruses and other compromises. RJ-45 ports can also act as a visual cue, showing inactive or disconnected ports.



PACK OF 10 LOCKS WITH KEY
AVAILABLE IN SETS OF BLACK,
GREEN, ORANGE, YELLOW



No. 47891



No. 47894



No. 47897



No. 47900

PACK OF 20 LOCKS WITHOUT KEY
AVAILABLE IN BLACK, GREEN,
ORANGE, YELLOW



No. 47892



No. 47895



No. 47898



No. 47901

KEY WITHOUT LOCKS
AVAILABLE IN BLACK,
GREEN, ORANGE, YELLOW



No. 47890



No. 47893



No. 47896



No. 47899

QUICK GUIDE FOR USING RJ-45 PORT BLOCKERS



01 A lock is attached to the key and inserted into an RJ-45 port.



02 The sliding mechanism on the key is then released leaving the lock in place.



03 To remove the lock, the key is inserted into the lock and pulled back. Simple!

APPLICATION EXAMPLES FOR COMPATIBLE DEVICES WITH RJ-45 PORTS



◀ Denies user access to Ethernet ports on desktop PCs in workplaces and schools.



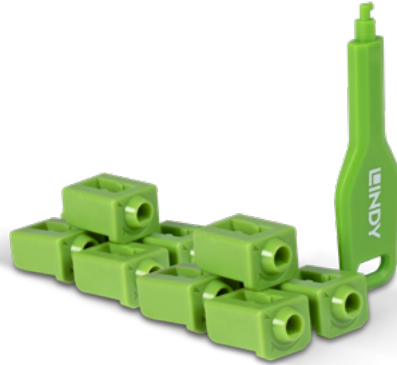
◀ Deters users from using Ethernet outlet ports in corporate buildings.



▲ Mark RJ-45 ports on network switches to show deactivated or inactive ports.

SFP PORT BLOCKER

SFP port blockers can lock the slots for SFP modules - for example on network switches - and thus prevent such modules from being plugged in. This offers additional protection, for example, if all free ports of a network switch are already protected with RJ45 port blockers and unauthorised access to the network via the module slots is also to be prevented.



PACK OF 10 LOCKS WITH KEY AVAILABLE IN GREEN



No. 47912

PACK OF 20 LOCKS WITHOUT KEY AVAILABLE IN BLACK, GREEN



No. 47913

KEY WITHOUT LOCKS AVAILABLE IN GREEN



No. 47911

QUICK GUIDE FOR USING SFP PORT BLOCKERS



01 A lock is attached to the key and inserted into an SFP port.



02 The sliding mechanism on the key is then released leaving the lock in place.



03 To remove the lock, the key is inserted into the lock and pulled back. Simple!

PROTECT.PREVENT.PRESERVE.
FIND MORE ABOUT PHYSICAL
SECURITY SOLUTIONS ON OUR
WEBSITE.