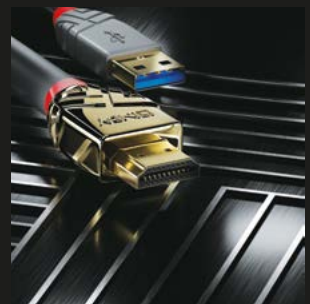
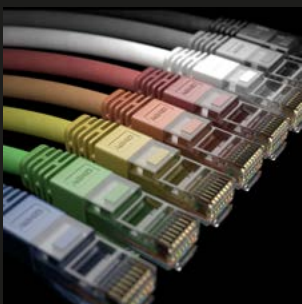
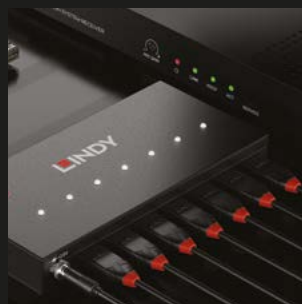


# LINDY ESSENTIALS

Connection Perfection for IT & AV

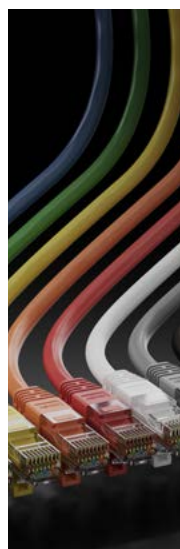


# CONTENT



## 04

HDMI® &  
DisplayPort™  
CABLES



## 09

PATCH  
CABLES



## 10

CONVERTERS  
& ADAPTERS



## 13

USB  
PRODUCTS



## 16

SPLITTERS  
SWITCHES  
MATRIX AV



## 18

EXTENDERS



## 21

PORT  
BLOCKERS



## 22

DOCKING  
STATIONS



## 24

CHARGERS &  
ACCESSORIES



## 26

NEW  
PRODUCTS

# INTRODUCING LINDY

More than

**200**

employees

**90**

countries

**1500**

products

**1**

brand

Established in 1932, Lindy is one of Europe's leading suppliers of cables & connectivity solutions.

With a comprehensive and innovative product portfolio, Lindy offers installers, system integrators and resellers the ultimate resource for cables and connection technologies.

Covering the complete range of IT & AV connectivity requirements, with full pre- and post-sales technical support, unbeatable customer service and expertise, Lindy is your ideal partner for connecting, sharing, converting and extending a wide array of digital and analogue signals.

## PRODUCT RANGE

### CONNECTING

Cable and adapter technology for the transmission of high-frequency IT & AV signals



### SHARING

Latest-generation technologies for signal splitting and switching



### CONVERTING

Converters and adapters for seamless integration of the latest and older IT & AV devices



### EXTENDING

Redefining signal ranges with repeater and extender products





# HDMI® CABLES

## HIGH SPEED HDMI® CABLE ANTHRA LINE

4K

- Professional choice High Speed HDMI® cable, HDMI® 2.0 compliant for commercial and high performance AV and IT installations
- Supports UHD resolutions up to 4K@60Hz and HDTV resolutions up to 1080p
- Robust PVC housing, 24K gold plated connectors and contacts
- Triple shielded cable, corrosion resistant tinned copper 30AWG conductors

LENGTH	NO.	LENGTH	NO.
0.3m	36960	2.0m	36963
0.5m	36961	3.0m	36964
1.0m	36962	5.0m	36965

## ULTRA HIGH-SPEED HDMI® CABLE ANTHRA LINE

8K

- Professional choice Ultra High Speed HDMI® cable, HDMI® 2.1 compliant, for commercial and high-performance AV and IT installations
- Supports resolutions up to 10K 4:2:0 12bit
- Robust PVC housing, 24K gold plated connectors and contacts
- Triple shielded cable, corrosion resistant tinned copper 28AWG conductors

LENGTH	NO.
0.5m	36951
1.0m	36952
2.0m	36953
3.0m	36954

## STANDARD HDMI® CABLE ANTHRA LINE

4K

- Superior performance and design Standard HDMI® cable
- Supports UHD resolutions up to 4K@60Hz 4:2:0 8bit
- Robust PVC housing, gold plated connectors and contacts
- Triple shielded cable, corrosion resistant bare copper 24AWG conductors
- HDMI® 2.0 compliant, 3D, 4K, 10.2Gbps, HEC, ARC, CEC, Dolby True HD, DTS-HD Master Audio, 10-year warranty

LENGTH	NO.
7.5m	36966
10m	36967
15m	36968
20m	36969

## 300m FIBRE OPTIC HDMI® 4K60 DONGLE EXTENDER

4K

- Extends HDMI® signals up to 300m using a single simplex LC OM3 or OM4 multi-mode cable
- Supports UHD resolutions up to 4K@60Hz 4:4:4 8bit
- Experience an expanded range of contrasts and colours with HDR (High Dynamic Range)
- Supports lossless HDMI® audio formats including Dolby Atmos & DTS-X

38392



## ARMOURED FIBRE OPTIC HYBRID HDMI® 8K60 CABLE

8K

- Combines copper and fibre optic cable for a hybrid, long distance HDMI® connectivity solution
- Supports resolutions up to 4K@120Hz, 8K@60Hz
- HDR formats including Dolby Vision & HDR10+
- Aramid fibres and additional armored steel-spiral jacket to get a rugged and resistant cable structure

LENGTH	NO.	LENGTH	NO.
10m	38527	50m	38531
15m	38528	70m	38532
20m	38529	100m	38533
30m	38530		



### FIBRE OPTIC HYBRID HDMI® 8K60 CABLE

- Combines copper and fibre optic cable for a hybrid, long distance HDMI® connectivity solution
- Supports resolutions up to 4K@120Hz, 8K@60Hz
- HDR formats including Dolby Vision & HDR10+
- Flexible and robust cable structure for any kind of installation

LENGTH	NO.	LENGTH	NO.
10m	38510	50m	38515
15m	38511	60m	38516
20m	38512	70m	38517
30m	38513	100m	38518
40m	38514		



### FIBRE OPTIC HYBRID MICRO-HDMI® 8K60 LSZH CABLE

- Combines copper and fibre optic cable for a hybrid, long distance HDMI® & Micro-HDMI® connectivity solution
- Supplied as a Micro-HDMI® Male to Male cable, with HDMI® premium metal connectors
- Supports HDMI® 48G resolutions up to 8K@60Hz with additional support for HDR
- Minimises toxic emissions with LSZH jacket

LENGTH	NO.	LENGTH	NO.
10m	38540	50m	38546
15m	38541	60m	38547
20m	38542	70m	38548
25m	38543	80m	38549
30m	38544	100m	38326
40m	38545		



### 4K60 HDMI® FLEXIBLE CABLE

- Flexible HDMI® Cable using a soft PVC Jacket
- Supports UHD resolutions up to 4K@60Hz 4:4:4 8bit
- Triple shielded cable, 28AWG Copper
- Supports 3D, 4K, 18Gbps, HEC, ARC, CEC, Dolby True HD, DTS-HD Master Audio

LENGTH	NO.
0.5m	37315
1.0m	37316
2.0m	37317
3.0m	37318
5.0m	37319



# DISPLAYPORT™ CABLES


**8K**

## DISPLAYPORT™ 1.4 CABLE ANTHRA LINE

- Professional choice DisplayPort™ 1.4 cable for commercial & high performance AV and IT installations
- Supports UHD resolutions up to 8K@60Hz 4:2:2 8bit including 4K@144Hz 4:2:2 10bit
- Robust ABS housing, 24K gold plated connectors and contacts
- Triple shielded cable, corrosion resistant tinned copper 28AWG conductors
- DisplayPort™ 1.4, 8K 4K, 3D, 32.4Gbps, 10-year warranty

LENGTH	NO.	LENGTH	NO.
0.5m	36480	3.0m	36483
1.0m	36481	5.0m	36484
2.0m	36482		

## DISPLAYPORT™ 1.2 CABLE ANTHRA LINE

**4K**

- Professional choice DisplayPort™ 1.2 cable for commercial & high-performance AV and IT installations
- Supports UHD resolutions up to 4K@60Hz 4:4:4 10bit
- Robust PVC housing, gold plated connectors and contacts
- Triple shielded cable, corrosion resistant tinned copper 26AWG conductors
- DisplayPort™ 1.2 compliant: 3D, 4K, 21.6Gbps, 10-year warranty

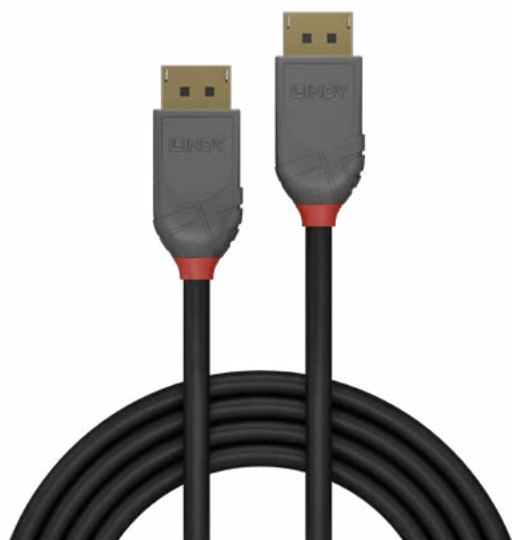
LENGTH	NO.
7.5m	36485
10m	36486



## DISPLAYPORT™ 1.1 CABLE ANTHRA LINE

- Professional choice DisplayPort™ 1.1 cable for commercial & high-performance AV and IT installations
- Supports resolutions up to 1920x1200@60Hz
- Robust PVC housing, gold plated connectors and contacts
- Triple shielded cable, corrosion resistant tinned copper 26AWG conductors
- DisplayPort™ 1.1 compliant: 10.8Gbps, 10-year warranty

LENGTH	NO.
1.5m	36487



## FIBRE OPTIC HYBRID DISPLAYPORT™ 2.0 UHBR10 CABLE

**8K**

- Combines copper and fibre optic cable for a hybrid, long distance DisplayPort™ connectivity solution
- Supports resolutions up to 4K@144Hz, 8K@60Hz
- DP 2.0 standard with UHBR10 support, 40Gbps bandwidth (4 lanes, 10Gbps per channel)
- Flexible and robust cable structure for any kind of installation



LENGTH	NO.	LENGTH	NO.
10m	38520	30m	38523
15m	38521	40m	38524
20m	38522	50m	38525

## FIBRE OPTIC HYBRID MINI DISPLAYPORT™ 1.4 CABLE WITH DETACHABLE DP CONNECTORS

- Combines copper and fibre optic cable for a hybrid, long-distance Mini DP & DP connectivity solution
- Supplied as a Mini DisplayPort™ male to male cable, with detachable DisplayPort™ connectors
- Supports DP 1.4 resolutions up to 8K@60Hz, 4K@120Hz with additional support for static and dynamic HDR
- No external power required


**8K**

LENGTH	NO.	LENGTH	NO.
10m	38480	50m	38484
20m	38481	70m	38485
30m	38482	100m	38486
40m	38483		



### 4K60 HDMI® CABLE, LSZH

- Supports UHD resolutions up to 4K@60Hz 4:4:4 8bit
- Minimises toxic emissions with LSZH (Low Smoke Zero Halogen) jacket
- Double shielded cable, 30AWG Copper
- Supports 3D, 4K, 18Gbps, HEC, ARC, CEC, Dolby True HD, DTS-HD Master Audio

LENGTH	NO.	LENGTH	NO.
0.5m	36501	5m	36505
1m	36502	7.5m	36506
2m	36503	10m	36507
3m	36504		

### ACTIVE DISPLAYPORT™ TO HDMI® CABLE WITH HDR

- Connects a DisplayPort™ equipped device to a 4K HDMI® display or projector
- Supports high quality resolutions up to 4K@60Hz
- High Dynamic Range support provides deeper blacks, brighter whites and a wider colour gamut
- Active chipset for enhanced compatibility with various graphic cards

LENGTH	NO.
1m	40925
2m	40926
3m	40927
5m	40928



### HDMI® TO DISPLAYPORT™ CABLE

- Connects an HDMI® equipped device to a DisplayPort™ display
- Supports high quality resolutions up to 4K@60Hz
- Compliant with HDMI® 2.0 and DisplayPort™ 1.2 specification
- High Dynamic Range support provides deeper blacks, brighter whites and a wider colour spectrum



LENGTH	NO.
1m	41498
2m	41499
3m	41500



# PATCH CABLES

## NETWORK CABLE CAT.6

CAT.6 S/FTP	0.3m	0.5m	1m	1.5m	2m	3m	5m	7.5m	10m	15m	20m	30m
Grey	47700	47701	47702	47703	47704	47705	47706	47707	47708	47709	47710	47711
Blue	47715	47716	47717	47718	47719	47720	47721	47722	47723	47724	47725	47726
Red	47730	47731	47732	47733	47734	47735	47736	47737	47738	47739	47740	47741
Green	47745	47746	47747	47748	47749	47750	47751	47752	47753	47754	47755	47756
Yellow	47760	47761	47762	47763	47764	47765	47766	47767	47768	47769	47770	47771
Black	47775	47776	47777	47778	47779	47780	47781	47782	47783	47884	47785	47786
White	47790	47791	47792	47793	47794	47795	47796	47797	47798	47799	47800	47801
Orange	47805	47806	47807	47808	47809	47810	47811	47812	47813	47814	47815	47816
Purple	47820	47821	47822	47823	47824	47825	47826	47827	47828	47829	47830	47831

## NETWORK CABLE CAT.6A

CAT.6A S/FTP LSZH	0.3m	0.5m	1m	1.5m	2m	3m	5m	7.5m	10m	15m	20m	30m
Grey	47130	47131	47132	47133	47134	47135	47136	47137	47138	47139	47140	47141
Blue	47145	47146	47147	47148	47149	47150	47151	47152	47153	47154	47155	47156
Red	47160	47161	47162	47163	47164	47165	47166	47167	47168	47169	47170	47171
Black	47175	47176	47177	47178	47179	47180	47181	47182	47183	47184	47185	47186
White	47190	47191	47192	47193	47194	47195	47196	47197	47198	47199	47200	47201
Yellow	47860	47861	47862	47863	47864	47865	47866	47867	47868	47869	47870	47871
Green	47675	47676	47677	47678	47679	47680	47681	47682	47683	47684	47685	47686

## NETWORK CABLE CAT.7 S/FTP LSZH

CAT.7 S/ FTP LSZH	0.3m	0.5m	1m	1.5m	2m	3m
Grey	47260	47261	47262	47263	47264	47265
Blue	47275	47276	47277	47278	47279	47280
Red	47290	47291	47292	47293	47294	47295
Green	47645	47646	47647	47648	47649	47650
Yellow	47660	47661	47662	47663	47664	47665
Black	47305	47306	47307	47308	47309	47310
White	47320	47321	47322	47323	47324	47325

CAT.7 S/ FTP LSZH	5m	7.5m	10m	15m	20m	30m
Grey	47266	47267	47268	47269	47270	47271
Blue	47281	47282	47283	47284	47285	47286
Red	47296	47297	47298	47299	47300	47301
Green	47650	47651	47652	47653	47654	47655
Yellow	47665	47666	47667	47668	47669	47670
Black	47311	47312	47313	47314	47315	47316
White	47326	47327	47328	47329	47330	47331



# CONVERTERS & ADAPTERS

## DISPLAYPORT™ 1.2 TO HDMI® 4K60 ACTIVE CONVERTER

4K

- Connects a DisplayPort™ source to an HDMI® 4K display or projector
- Supports resolutions up to 4K@60Hz
- Audio pass-through if supported by the video source
- Active chipset for enhanced compatibility with various graphic cards



41068



41069

### PRODUCTS

	NO.
DisplayPort™ 1.2 to HDMI® 4K60 Active Converter	41068
Mini DisplayPort™ 1.2 to HDMI® 4K60 Active Converter	41069

## DISPLAYPORT™ & MINI DISPLAYPORT™ CONVERTER

4K

- Converts a DisplayPort™ signal to HDMI®, DVI or VGA
- Supported resolutions
  - HDMI®** 4K@60Hz [38297] 4K@30Hz [41028, 41035, 41039]
  - DP** 4K@60Hz [41028, 38297] 4K@30Hz [41035]
  - VGA** Full HD@60Hz [41028, 38297, 41035]
  - DVI** 1920x1200@60Hz [all]
- Easily connects with a single legacy or modern display
- Compact, portable design



41028



41035

### PRODUCTS

	NO.
DisplayPort™ 1.2 to HDMI®, DVI & VGA Active Converter	41028
Mini DisplayPort™ to HDMI®, DVI & VGA Converter	41035

## HDMI® 2.1 EDID EMULATOR

8K

- Continuously emulate HDMI® EDID information
- Supports resolutions up to 8K@60Hz or 4K@120Hz with additional support for HDR
- Uses Cloned Data or Pre-stored resolutions/timings
- Headless connection [No monitor connection required]

32119



## DISPLAYPORT™ 1.4 EDID EMULATOR

- Continuously emulates DisplayPort™ EDID information
- Supports resolutions up to 8K@30Hz or 4K@ 144Hz, with additional support for HDR
- Uses Cloned Data or Pre-stored resolutions/timings
- Headless connection [No monitor connection required]

32118



**HDMI® TO DISPLAYPORT™  
CONVERTER**

- Connects an HDMI® source to a DP display
- Supports resolutions up to 4K@60Hz [38327], and up to 8K@60Hz [38329]
- High Dynamic Range support provides deeper blacks, brighter whites and a wider colour gamut
- Includes USB cable for power supply

PRODUCTS	NO.
HDMI® 4K60 to DisplayPort™ 1.2 Converter	38327
HDMI® 8K60 to DisplayPort™ 1.4 Converter	38329



**DISPLAYPORT™ TO HDMI® 8K60  
ACTIVE CONVERTER**

8K

- Connects a DisplayPort™ 1.4 source to an HDMI® 8K60Hz Display
- Supports resolutions up to 8K@60Hz and 4K@120Hz
- Audio pass-through if supported by the video source
- Active chipset for enhanced compatibility with various graphic cards



**HDMI® TO USB TYPE C CONVERTER  
WITH USB POWER**

- Connects an HDMI® source to a USB Type C equipped display
- Supports resolutions up to 4K UHD 4K@60Hz
- Supports 2-channel audio and touch-control
- USB cable for power and data included



**HDMI® TO DISPLAYPORT™  
DVI & VGA CONVERTER**

- Converts HDMI® signals into DisplayPort™, DVI or VGA signals
- Supports Ultra HD resolutions 4K@30Hz for DisplayPort™ and 1920x1200@60Hz for DVI/VGA
- Easily connects with a single legacy or modern display at any one time
- Quick and simple plug & play installation



**USB TYPE C TO DISPLAYPORT™  
4K144 CONVERTER**

- Converts a USB Type C port to a DP port
- Supports resolutions up to 4K@144Hz
- Requires DisplayPort™ Alternate Mode support by the USB Port/Bus
- Plug & Play, no drivers required





43426



43428

## USB TYPE C CONVERTER

- Requires DisplayPort™ Alternate Mode support by the USB Port/Bus
- Supported resolutions  
8K@60Hz
- Plug & Play, no drivers required

### PRODUCTS

USB Type C to DisplayPort™ 8K60 Converter  
USB Type C to HDMI® 8K60 Converter

### NO.

43426  
43428

## ADAPTERS

### PRODUCTS

Mini DP to DP Adapter  
HDMI® Female to DVI-D Male Adapter  
DVI-D Female to HDMI® Male Adapter Cable, 0.2m  
USB 3.2 Type A to C Adapter  
USB 3.2 Type C to A Adapter

### NO.

41089  
41228  
41227  
41904  
41899



41228



41227



41899



41904



41089



# USB PRODUCTS

## USB4 TYPE C TO C CABLE 40Gbps, 240W PD, ANTHRA LINE

**8K**

- Blazing fast data transfer speeds up to 40Gbps
- Delivers up to 240W of power via USB Power Delivery (48V 5A)
- Supports video at up to 8K 60Hz via DisplayPort™ Alternate Mode
- Industrial-grade construction featuring triple-shielded cable, soft TPE jacket, and gold-plated contacts



LENGTH	NO.
0.8m	36956
1.5m	36957
2.0m	36958

## USB 3.2 TYPE A TO A CABLE 5Gbps, ANTHRA LINE

- Professional choice USB 3.2 Gen 1 Type A to A cable for commercial and high-performance AV and IT installations
- SuperSpeed USB 5Gbps
- Robust PVC housing, gold plated connectors and contacts
- Triple shielded cable, corrosion resistant tinned copper conductors

LENGTH	NO.
0.5m	36750
1.0m	36751
2.0m	36752
3.0m	36753
5.0m	36754



## USB 3.2 TYPE A TO MICRO-B CABLE 5Gbps, ANTHRA LINE

- Professional choice USB 3.2 Gen 1 Type A to Micro-B cable for commercial and high-performance AV & IT installations
- SuperSpeed USB 5Gbps
- Robust PVC housing, gold plated connectors and contacts
- Triple shielded cable, corrosion resistant tinned copper conductors

LENGTH	NO.
0.5m	36765
1.0m	36766
2.0m	36767
3.0m	36768



## USB 3.2 TYPE A TO B CABLE 5Gbps, ANTHRA LINE

- Professional choice USB 3.2 Gen 1 Type A to B cable for commercial and high-performance AV and IT installations
- SuperSpeed USB 5Gbps
- Robust PVC housing, gold plated connectors and contacts
- Triple shielded cable, corrosion resistant tinned copper conductors

LENGTH	NO.
0.5m	36740
1.0m	36741
2.0m	36742
3.0m	36743
5.0m	36744

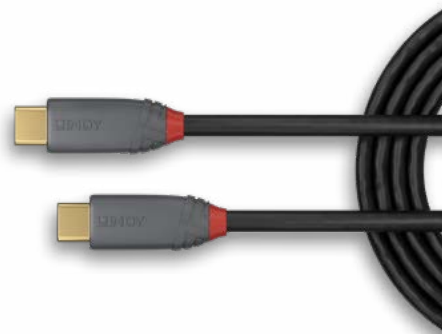


## USB 3.2 TYPE C TO C CABLE, 20Gbps, 100W PD, ANTHRA LINE

**4K**

- Ultra high speed data transfer up to 20Gbps
- Delivers up to 100W of power via USB Power Delivery (20V 5A)
- Supports video at up to 4K 60Hz via DisplayPort™ Alternate Mode
- Featuring triple-shielded cable and gold-plated connectors

LENGTH	NO.
0.5m	36900
1.0m	36901
1.5m	36902
2.0m	36903



## ACTIVE EXTENSION

- Supports transfer rates up to 5Gbps
- Active USB Extensions for different connector types
- Plug & Play

### PRODUCTS

PRODUCTS	NO.
5m USB 3.0 Active Extension	43155
5m USB 3.2 Gen 1 C/C Active Extension	43271
3m USB 3.0 Active Extension Slim	43400
5m USB 3.0 Active Extension Slim	43401
8m USB 3.0 Active Extension Slim	43402
10m USB 3.0 Active Extension Slim	43403
15m USB 3.0 Active Extension Slim	43404



43155



43400-4



43271

## USB 3.0 ACTIVE EXTENSION PRO

- Supports transfer rates up to 5Gbps
- Cascadeable up to 40m
- Plug & Play

LENGTH	NO.
8m	43158
10m	43157
15m	43229
20m	43361
30m	43362
Hub 10m	43159



43159



## 5m USB 3.2 10Gbps C/C ACTIVE EXTENSION PRO

- High performance, active cable that provides an extended 5m connection between a computer with USB Type C port and a USB Type C device
- Cascadeable up to a maximum distance of 15m
- Supports the full USB 3.2 / 3.1 Gen 2 bandwidth for speeds of 10Gbps
- USB Power Adapter cable included

43405



## USB HUBS

- Supports transfer rates up to 5Gbps or 10Gbps

### PRODUCTS

PRODUCTS	NO.
5m USB 3.0 Hub, 4 Ports 8m	43388
7 Port USB 3.2 Gen 2 Metal Hub	43275
4 Port USB 3.0 Hub with 3 Quick Charge 3.0 Ports	43371
USB 3.2 Gen 2 Type C Hub & Gigabit Ethernet	43422



43388



43275



43371



43422

**USB 3.2 TYPE A TO C CABLE**  
**10Gbps, 100W PD, ANTHRA LINE**

- Professional choice USB 3.2 Gen 2 Type A to C, 5A [100W], cable for commercial and high-performance AV and IT installations
- SuperSpeed USB 10Gbps
- Robust PVC housing, gold plated connectors and contacts
- Triple shielded cable, corrosion resistant tinned copper conductors



LENGTH	NO.
0.5m	36910
1.0m	36911
1.5m	36912
2.0m	36913
3.0m	36919

**ACTIVE USB 3.2 GEN 2**  
**C/C CABLE**
**8K**

- USB 3.2 Gen 2 Active Cable for data and video extension
- Data transfer rates up to 10Gbps
- Supports DisplayPort™ 1.4 Alternate Mode and video resolutions up to UHD 8K@60Hz including 4K@120Hz
- Supports Power Delivery up to 100W (20V 5A)

LENGTH	NO.
3.0m	43348
5.0m	43308


**USB 3.2 TYPE A TO C CABLE**  
**10Gbps, BLACK LINE**

- High speed data transfer up to 10Gbps
- Delivers up to 15W of power (5V 3A) for charging mobile phones, tablets and other devices efficiently throughout the workday
- Perfect for connecting modern USB-C devices to traditional USB-A ports
- Triple-shielding for enhanced signal integrity and nickel-plated connectors

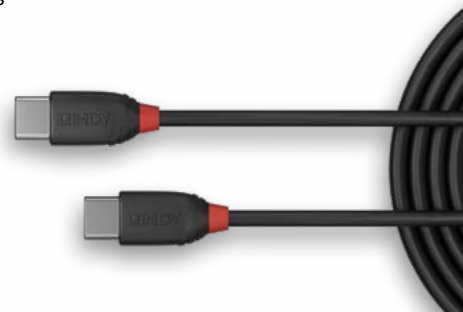


LENGTH	NO.
0.15m	36914
0.5m	36915
1.0m	36916
1.5m	36917

**USB 3.2 TYPE C TO C CABLE**  
**20Gbps, 60W PD, BLACK LINE**
**4K**

- Ultra-high-speed data transfer up to 20Gbps
- Delivers up to 60W of power via USB Power Delivery (20V 3A)
- Supports video at up to 4K@60Hz via DisplayPort™ Alternate Mode
- Triple-shielding for enhanced signal integrity and nickel-plated connectors

LENGTH	NO.
0.5m	36905
1.0m	36906
1.5m	36907


**USB 3.2 GEN 2 & DP 1.4 TYPE C**  
**HYBRID CABLE**
**4K**

- USB 3.2 Gen 2 & DP 1.4 Type C Hybrid Cable for data and video extension
- Data transfer rates up to 10Gbps
- Supports DisplayPort™ Alternate Mode and DP 1.4 (4 lanes) with video resolutions up to 4K@144Hz or 8K@ 30Hz
- Supports Power Delivery up to 60W (20V 3A)



LENGTH	NO.
10m	43398
15m	43399

**USB 3.2 GEN 1 & DP 1.4 TYPE C**  
**HYBRID CABLE**
**4K**

- 10m USB 3.2 Gen 1 & DP 1.4 Type C Hybrid Cable for data and video extension
- Data transfer rates up to 5Gbps
- Supports DisplayPort™ Alternate Mode and DP 1.4 (2 lanes) with video resolutions up to 4K@30Hz
- Supports Power Delivery up to 60W (20V 3A)



LENGTH	NO.
8m	43393
10m	43333

# SPLITTERS / SWITCHES / MATRIX AV

## HDMI® SPLITTER

- Splits a single HDMI® 2.1 source across 2 or 4 HDMI® displays
- HDCP 2.2/2.3 for enhanced compatibility with 8K content EDID Management for hassle free installation

8K

38535

38534

38235

38237

4K

38236

38239

### PRODUCTS SUPPORTING 8K60

- 2 Port HDMI® 8K60 Splitter with Audio & Downscaling
- 4 Port HDMI® 8K60 Splitter with Audio & Downscaling

NO.

38534  
38535

### PRODUCTS SUPPORTING 4K60

- 2 Port HDMI® 4K60 Splitter
- 4 Port HDMI® 4K60 Splitter
- 8 Port HDMI® 4K60 Splitter
- 16 Port HDMI® 4K60 Splitter

NO.

38235  
38236  
38237  
38239

4K

## 70m CAT.6 4 PORT HDMI® 4K60 & IR SPLITTER EXTENDER

- Distributes 4K HDMI® signals to up to 4 displays in multiple locations
- Supports resolutions up to 4K@60Hz, with additional support for HDR
- Features a loop-through HDMI® output on the transmitter for local monitoring or cascading for larger installs
- Supports Power over Cable (PoC) to the receivers, only a single power supply is required for operation

LENGTH  
70mNO.  
38262

## DISPLAYPORT™ 1.2 MST HUB

- Expands or duplicates the desktop or display independent DP/Mini DP signals over dual DP monitors
- Compatible with various graphics cards including AMD Eyefinity, NVIDIA Surround and Intel Collage
- Supports resolutions up to 4K 30Hz, and audio up to 7.1CH

### PRODUCTS

- 2 Port DisplayPort™ 1.2 MST Hub
- 4 Port DisplayPort™ 1.2 MST Hub
- Mini DisplayPort™ to 2 Port HDMI® MST Hub
- DisplayPort™ to 2 Port HDMI® MST Hub

NO.

38430  
38431  
38432  
38433

38430



38431



38432



38433

4K



## HDMI® SWITCHES

- Switches between 3 HDMI® source devices when connected to a single display


**4K**

 2 Port Dual Head HDMI® 4K60,  
 USB 3.0 KVM Switch

**39314**

**4K**

4 Port HDMI® 4K60 Switch with Audio

**38249**

**4K**

 5 Port Seamless Presentation Switch HDBaseT  
 Extender - Transmitter

**38338**


5 Port Seamless Multiview KVM Switch

**32330**

**4K**

5 Port HDMI® 4K60 Switch

**38233**

 9 Port HDMI® 4K30  
 Multi-View Switch

**38330**

**8K**

 2 Port HDMI® 8K60  
 Bi-Directional Switch

**38339**

## 4x4 HDMI® 4K60 SEAMLESS MULTI-VIEW MATRIX

- Switches between 4 HDMI® source devices and 4 HDMI® displays as a professional matrix
- Creates classic video walls from 9 different layouts
- Seamlessly switch between devices under 0.1ms
- Choose from 16 different multi-view layouts

**4K**

**38390**

## 8x8 HDMI® 18G MATRIX WITH VIDEO WALL SCALING

**4K**

- Switches between 8 HDMI® source devices and 8 HDMI® displays as a professional matrix
- Creates single video walls (up to 4x2) or multiple video walls (2x2)
- Seamlessly switch between devices under 0.1ms
- Control output scaling to ensure the optimum or consistent resolution is shown


**38260**

## 16x16 HDMI® 4K60 MATRIX

- Switches between 16 HDMI® source devices and 16 HDMI® displays connected simultaneously
- Supports resolutions up to 4K 60Hz, with additional support for HDR
- Allows for flexible and convenient switching between 16 HDMI® sources, perfect for commercial and professional settings
- Easy to use and set up, with an intuitive Web GUI, Remote Control or Push Buttons

**4K**

**38359**

## 8x8 HDMI® 4K60 MATRIX

- Switches between 8 HDMI® source devices and 8 HDMI® displays connected simultaneously
- Supports resolutions up to 4K 60Hz with additional support for HDR
- Allows for flexible and convenient switching between 8 HDMI® sources, perfect for commercial and professional settings
- Easy to use and set up, with an intuitive Web GUI, Remote Control or Push Buttons

**4K**

**38334**

# EXTENDERS

## HDMI® EXTENDER

- An HDMI® loop-through output creates an additional viewing zone with a local display
- Supports resolutions up to 4K@60Hz 4:4:4 8bit, with support for HDR
- PoC (Power over Cable) functionality for power from a single power supply

### PRODUCTS

50m Cat.6 HDMI® 4K60 & IR Extender with PoC & Loop Out  
70m Cat.6 HDMI® 4K30 & IR Extender with PoC & Loop Out

### NO.

38205  
38208



## HDBaseT EXTENDER

- ARC Support as well as RS-232, CEC & Ethernet pass-through & bi-directional IR for simple control
- Supports PoC (Power over Cable), requiring a power supply connection from only one side of the installation

4K



100m Cat.6 HDMI® 4K60, Audio, IR & RS-232 HDBaseT Extender

38340



4K



100m Cat.6 HDMI® 4K60, Audio, IR & RS-232 HDBaseT Transmitter

38341

4K



100m Cat.6A HDMI® 4K60, Audio, IR & RS-232 HDBaseT 3.0 KVM Extender

38344

4K



100m Cat.6 HDMI® 4K60, Audio, IR & RS-232 HDBaseT Receiver

38342



70m Cat.6 HDMI® 4K30, IR & RS-232 HDBaseT Extender with PoC

38139

## HDMI® & IR OVER IP EXTENDER

- Distributes HDMI® signals 1-1 or 1-many as part of a networked installation
- Supports resolutions up to 1920x1080@60Hz
- Adds additional receivers to the network for larger scale distribution

38398



## HDMI® & IR OVER IP EXTENDER - RECEIVER

- Adds additional HDMI® over IP receivers to No. 38398 to create larger networked distribution setups
- Simple, scalable solution for developing 1-to-many installations
- Supports resolutions up to 1920x1080@60Hz

38399



## SDVoE CONTROLLER

- Enables the management and configuration of multiple Video over IP SDVoE extender No. 38365 through a single Web GUI
- Dual network ports, one for network control and one for multicast video distribution
- Supports PoE, I/O level output and voltage 5V or 12V

38364



4K

## 4K60 HDMI® & USB SDVoE EXTENDER - TRANSCEIVER

- Supports uncompressed resolution up to 4K@60Hz 4:4:4 with HDR10 and no latency
- Encoder or Decoder mode
- Automatic detection of Fiber and Copper connection
- Supports PoE and Multicast, Video Wall and Multiview configurations

38365



4K

## KVM OVER IP EXTENDER

- Extends HDMI® Full HD, USB HID and IR Over an IP network
- Supports point to point and point to multipoint installation up to 150m
- Adds additional receivers to the network for larger scale distribution

### PRODUCTS

	NO.
Extender	39320
Receiver	39321

4K



39321



39320



## 4K30 HDMI® & USB OVER IP SYSTEM

- Supports resolutions up to 4K@30Hz 4:4:4 8bit
- Point-to-point, matrix, KVM and video wall applications, via IP
- Simple control via Web GUI, TCP, IR, RS-232 and PLC PoE support

### PRODUCTS

	NO.
Controller	38395
Encoder	38396
Decoder	38397

4K



38395



38396



38397



### 70m CAT.6A HDMI® 4K60 & TYPE C HDBaseT 3.0 KVM EXTENDER

- Sends uncompressed HDMI® resolutions up to 70m over Cat.6A network cable via HDBaseT 3.0 technology
- Supports HDMI® 18G resolutions up to 4K@60Hz 4:4:4, with additional support for HDR
- Type C input supporting DisplayPort™ Alternate mode, USB 2.0 and 60W charging power
- Supports USB 2.0, de-embedded Audio, RS-232, bi-directional IR and PoC (Power over Cable)

38346



4K

### 150m CAT.6 HDMI® 4K60 & TYPE C HDBaseT EU WALL PLATE KVM EXTENDER, TRANSMITTER

- Sends HDMI® or Type C signals up to 150m over Cat.6 network cable via HDBaseT technology with Long Reach mode
- Supports HDMI® 18G resolutions up to 4K@60Hz 4:4:4, with additional support for HDR
- Supports USB 2.0, Audio, RS-232, bi-directional IR and PoC (Power over Cable)
- EU standard 1-gang wall plate (86x86mm)

38388



4K

### 100m 2 PORT USB 2.0 CAT. 6 EXTENDER

- Extends 2 USB 2.0 ports up to 100m using low cost Cat. 6 network cable (not included)
- Bi-directional PoC (Power over Cable) requires a power supply connection from only one side of the installation
- Supports USB 2.0 High Speed and USB 1.1 Full Speed / Low Speed
- Plug & Play installation

43408



### 100m MPO FIBRE OPTIC HDMI® 8K60 EXTENDER [WITH MEDICAL CERTIFICATIONS]

- Extends HDMI® signals up to 100m using a Type A MPO OM3 multimode 12x50/125µm fibre optic cable (not included)
- Supports UHD resolutions up to 8K@60Hz
- Supports 48Gbps bandwidth (4\*12Gbps), lossless HDR and multi-channel audio formats
- Low EMI and low power consumption for medical and industrial environments

38360



8K

### 150m CAT.6 HDMI® 4K60, IR, RS-232 & AUDIO HDBaseT KVM EXTENDER, RECEIVER

- Distributes HDMI® resolutions up to 150m over Cat.6 network cable via HDBaseT technology with Long Reach mode
- Supports HDMI® 18G resolutions up to 4K@60Hz 4:4:4, with additional support for HDR
- Supports USB 2.0, Audio, RS-232 and bi-directional IR for control
- Supports PoC (Power over cable), requiring a power supply connection from only one side of the installation

38389





# PORT BLOCKERS

## SFP PORT BLOCKER

- Quickly and easily blocks physical access to SFP Network ports
- Prevents users from inserting cables, devices or foreign objects without permission

### GREEN

Pack (10 Locks + 1 Key)	47912
Lock (20pcs)	47913
Key (1pc)	47911



## RJ45 PORT BLOCKER

- Quickly and easily blocks physical access to RJ-45 Network ports
- Prevents users from inserting cables, devices or foreign objects without permission

### BLACK

### GREEN

### ORANGE

### YELLOW

Pack (10 Locks + 1 Key)	47891	47894	47897	47900
Lock (20pcs)	47892	47895	47898	47901
Key (1pc)	47890	47893	47896	47899



## USB TYPE A PORT BLOCKER

- Physically prevents access to a USB Type A Port
- Quick and simple to use



### PINK GREEN BLUE ORANGE WHITE

Pack (4 Locks + 1 Key)	40450	40451	40452	40453	40454
Lock (10pcs)	40460	40461	40462	40463	40464
Key (1pc)	40620	40621	40622	40623	40624

## USB TYPE C PORT BLOCKER

- Physically prevents access to a USB Type C / Thunderbolt 3 Port
- Quick and simple to use



### PINK GREEN BLUE ORANGE WHITE

Pack (4 Locks + 1 Key)	40425	40426	40465	40428	40427
Lock (10pcs)	40437	40438	40466	40440	40439

# DOCKING STATIONS

## DST-PRO USB4



- Supports 8K@30Hz for a single screen or 4K@60Hz for two screens (using DP MST)
- Integrated hub with 4 USB 3.2 10Gbps ports
- 4 x USB 3.2 Gen 2 (2 x Type C, 1 x Type A), 2 x USB 2.0 (Type A), Gigabit Ethernet, Analogue Audio, SD Card Reader

8K



43372

## DST-PRO 5K XT



- Supports 5K@60Hz (DisplayPort™) and 4K@60Hz (HDMI®) for single and dual display options
- Supports 1x 4K@60Hz and 2x 4K@30Hz for triple displays USB 3.2 5Gbps
- 3 x USB Type A, 1 x Type C, RJ-45, Micro-SD & SD Reader, Audio

5K



43349

## DST-PRO UNIVERSAL



- Supports 4K@60Hz for single display option
- Supports 1x 4K@30Hz & 2x 4K@60Hz for triple displays
- 3 x HDMI®, 2 x DisplayPort™
- USB 3.2 10Gbps
- 3 x USB type A, 2 x Type C, RJ-45, Audio

4K



43366

## 2 PORT TYPE C MST KVM DOCKING STATION



- Controls two USB-C source devices - ideal for desktop and conference room applications
- Both sources can use the connected USB devices (5Gbps per port)
- Supports 1x 4K@60Hz & 1x 4K30 + 1x 1080p for dual displays
- Dual USB Power Delivery 3.0 (100W + 65W)
- 3x USB Type A, 3x USB-C (1 for PD), RJ-45, Audio

4K



43202

### DST-MINI XT 810



- Connects an HDMI® and/or DisplayPort™ display, USB devices and power using a single connected cable
- Supports 8K@30Hz for a single display or 4K 60Hz for 2 displays (MST), (please note that macOS does not support MST)
- Integrated SuperSpeed 10Gbps 3-port USB hub (2 x Type A, 1 x Type C)
- USB Power Delivery compatible up to 100W

---

 43392

**8K**


### DST-MINI



- Adds two USB Type A ports, an HDMI® port, Gigabit Ethernet and a Power Delivery port to your notebook
- Supports 4K@60Hz for an HDMI® display
- Features DisplayPort™ Alternate Mode
- USB Power Delivery (PD 3.0 up to 100W) to charge the laptop while using the DST Mini

---

 43358

**4K**


### DST-MINI DUO



- Connects 2 HDMI® displays, USB peripherals, Gigabit Ethernet and power over a single cable
- Supports 8K@30Hz or 4K@120Hz for a single display and 4K for two displays (MST)
- Integrated 3 port SuperSpeed USB 10Gbps Hub (2 x USB Type A, 1 x Type C) and 3port 5Gbps Hub
- USB Power Delivery capable up to 100W

---

 43373

**4K**


# CHARGERS & ACCESSORIES

## USB CHARGER WHITE, EU

- Fast charging for smartphones, tablets and other mobile devices
- Compact design and lightweight for maximum mobility
- Built-in safety features such as overvoltage and overcurrent protection



PRODUCTS	NO.
18W USB Type A Charger	73412
20W USB Type C GaN Charger	73410
20W USB Type A & C Charger	73413
30W USB Type A & C Charger	73424

## USB CHARGER WHITE, UK

- Fast charging for smartphones, tablets and other mobile devices.
- Compact design and lightweight for maximum mobility
- Built-in safety features such as overvoltage and overcurrent protection



PRODUCTS	NO.
20W USB Type C GaN Charger	73411
18W USB Type A Charger	73415
20W USB Type A & C Charger	73416
30W USB Type A & C Charger	73425

## 65W USB GaN CHARGER, EU & UK

- Charges and powers device[s] via USB Type C and/or Type A
- 65W GaN technology provides fast charging for smartphones, tablets, laptops and other mobile devices
- Compact design and lightweight for maximum mobility
- Built-in safety features such as overvoltage and overcurrent protection



PRODUCTS	NO.
65W USB 2x Type C Charger, EU, black	73438
65W USB 2x Type C Charger, UK, black	73439
65W USB Type C GaN Charger, UK, white	73427
65W USB Type A & C GaN Charger, EU, white	73428
65W USB Type A & C GaN Charger, UK, white	73429

## 100W 4-PORT USB TYPE A & C GaN CHARGER, UK & EU

- Charges and powers multiple devices simultaneously via multiple USB Type C and USB Type A ports
- 100W Power Delivery via the USB Type C ports provide fast charging for smartphones, tablets, laptops and other mobile devices
- Compact design for maximum mobility
- Built-in safety features such as overvoltage and overcurrent protection



73441

## USB CHARGING STATION

- Simultaneous charging of several devices
- Smart charging feature adjusts current for optimal, safe charging
- Supports Battery Charging Standard 1.2 for fast charging & Apple's charging protocol

PRODUCTS	NO.
96W 10 Port USB Charging Station	73309
120W 10 Port USB Charging Station - 8 USB A ports and 2 USB C ports	73435
160W 6 Port USB Charging Station - 3 USB A ports and 3 USB C ports including 1 140W port, supports Power Delivery 3.0	73436



5V 2.4A  
3x USB A

30W  
2x PD

140W  
1x PD



## UNDER DESK CPU HOLDER

- With 360° swivelling action and can be pulled from under the desk up to 140mm
- Holds a maximum weight of 30kg
- Suitable for any work surface with a thickness of 15mm and above
- Suitable for computer measuring: (WxDxH) 160-220 x 450 x 340-490mm approx

40284



## DUAL MOUNT DESKTOP GAS SPRING ARM

- Offers freedom of movement for up to two display monitors, creating an optimum viewing experience
- Integrated cable management helping to create a clean and tidy workstation
- Easy installation by tightening the supplied C-Clamp to any desk
- VESA Compliant with both 75x75 and 100x100mm

40708



## LAPTOP/NOTEBOOK DISPLAY ARM

- Desk-mountable arm with notebook and display plate
- Display plate supports VESA standards 75 x 75mm and 100 x 100mm
- Height adjustable: 200mm-340mm
- Supports a maximum weight: 10kg

40982



## SINGLE DESKTOP GAS ARM DISPLAY MOUNT

- Offers freedom of movement of a single display monitor, creating an optimum viewing experience
- Integrated cable management helping to create a clean and tidy workstation
- Easy installation by tightening the supplied C-Clamp to any desk
- VESA Compliant with both 75x75 and 100x100mm

40707



# NEW PRODUCTS

## CAT.6A U/FTP LSZH SOLID CORE NETWORK CABLE

- Twisted Pair Patch Cable with RJ45 connectors
- Cat.6A, U/FTP Solid Core, LSZH
- Integrated snagless connector for latch protection
- Gold plated pins for better conductivity and elimination of signal loss
- Ideal for use in A/V applications using HDBaseT extenders

LENGTH	NO.	LENGTH	NO.
50m	48650	80m	48653
60m	48651	90m	48654
70m	48652	100m	48655



## CAT.6A S/FTP GRS TPE NETWORK CABLE

- Twisted Pair Patch Cable with RJ45 connectors
- Cat.6A S/FTP PIMF, TPE
- Fully GRS Certified, made from 50% Recycled Materials
- Integrated snagless connector for latch protection

LENGTH	NO.	LENGTH	NO.
0.3m	47915	5.0m	47921
0.5m	47916	7.5m	47922
1.0m	47917	10m	47923
1.5m	47918	15m	47924
2.0m	47919	20m	47925
3.0m	47920		



## HIGH SPEED HDMI® CABLE GRS

- Made from 50% Recycled Copper and 100% Recycled TPE
- Supports UHD resolutions up to 4K@60Hz 4:4:4 8bit
- Triple shielded cable, 28AWG Copper
- Supports 3D, 4K, 18Gbps, HEC, ARC, CEC, Dolby True HD, DTS-HD Master Audio

LENGTH	NO.
1m	37410
2m	37411
3m	37412
5m	37413



USB 3.2 USB TYPE A TO C CABLE  
10Gbps, GRS

- Made from recycled materials and certified with the Global Recycled Standard [GRS]
- High-speed data transfer up to 10Gbps for quick and efficient file transfers
- Delivers up to 15W of power [5V 3A] for charging smartphones, tablets and other devices

Reduce  
Re-use  
Recycle



LENGTH	NO.
0.5m	36970
1.0m	36971
1.5m	36972

USB 3.2 USB TYPE C TO C CABLE  
20Gbps, GRS

- Made from recycled materials and certified with the Global Recycled Standard [GRS]
- Super-speed data transfer up to 20Gbps for quick and efficient file transfers
- Delivers up to 100W of power [20V 5A] for charging smartphones, tablets and notebooks
- Supports video at up to 4K 60Hz via DisplayPort™ Alternate Mode, enabling high-resolution video

Reduce  
Re-use  
Recycle



LENGTH	NO.
0.5m	36975
1.0m	36976
1.5m	36977

4K

USB 3.2 GEN 1 TYPE A TO C  
HYBRID CABLE

- Active Optical USB 3.2 Gen 1 Cable, backwards compatible with USB 2.0
- Supports transfer rates up to 5Gbps, backwards compatible with USB 2.0 devices
- Aramid fibres for a robust cable structure
- Low RFI/EMI for sensitive environments

LENGTH	NO.
10m	43395
25m	43396
50m	43397



100m CAT.6A 2 HOST USB 3.2 GEN 1  
HDBaseT EXTENDER

- Extends USB 3.2 Gen 1 signals from 2 hosts up to 100m using Cat.6A network cable (not included)
- Power over Cable requires a single power supply to be connected to the transmitter or receiver only
- Supports USB 3.2 Gen 1 (USB 3.0) up to 5Gbps, USB 2.0/1.1 backwards compatibility, RS-232, APIs and FSYNC pass-through ports
- Plug & Play installation

43421



100m CAT.6A USB 3.2 GEN 1 & HDMI® 4K60  
HDBaseT EXTENDER

- Extends USB 3.2 Gen 1 and AV signals from 2 Type C hosts up to 100m using Cat.6A network cable (not included)
- Type C Power Delivery 100W port on the Tx, DisplayLink technology for video over USB on dual HDMI® 4K60 outputs on the Rx
- Supports USB 3.2 Gen 1 (USB 3.0) up to 5Gbps, USB 2.0/1.1 backwards compatibility, RS-232, APIs, Audio and FSYNC pass-through ports

39365

4K



4x4 USB 3.2 GEN 1  
MATRIX SWITCH

- Supports USB 3.2 Gen 1 (USB 3.0), USB 2.0/1.1 backwards compatibility
- Switching between computers with buttons, TCP/IP with web GUI or RS-232 commands
- Matrix switch with presets function
- Plug & Play, no software required

43406





Explore Lindy's  
global presence

Lindy and the Lindy logo are registered trademarks of The Lindy Group. Other trademarks are the property of their respective owners. Technical modifications and other reservations. The content of this brochure has been created with the utmost care. No liability or guarantee is accepted for the completeness or accuracy of the information. This brochure does not constitute a contractual offer information only (non-binding). © Lindy Group

The terms HDMI, HDMI High-Definition Multimedia Interface, HDMI Trade dress and the HDMI Logos are trademarks or registered trademarks of HDMI Licensing Administrator, Inc.